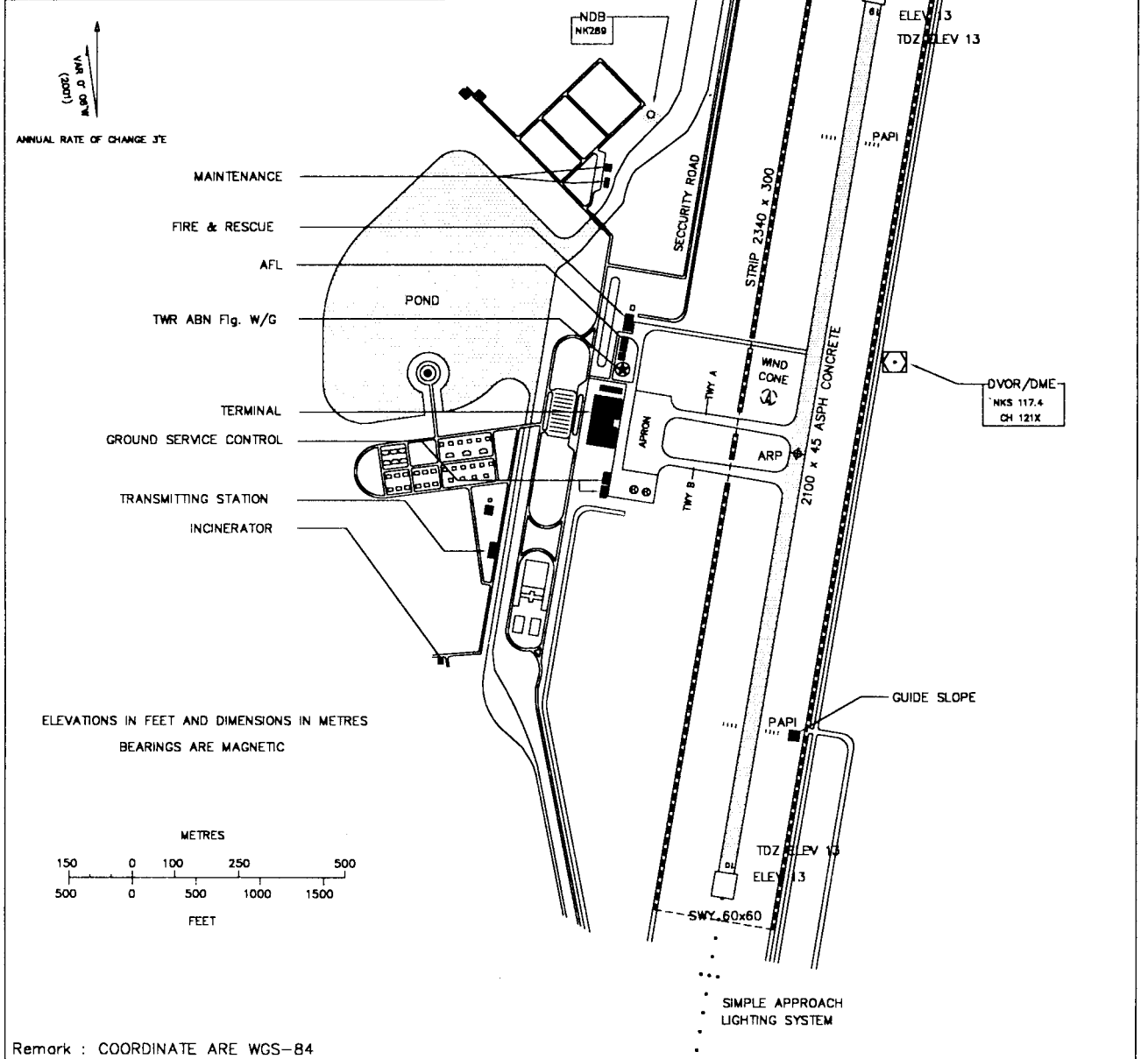


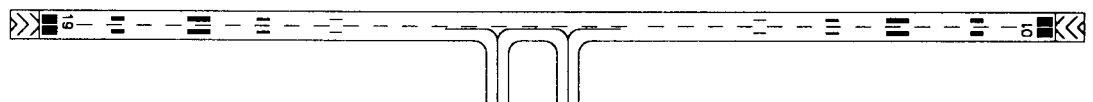
AERODROME CHART-ICAO 08° 32' 23" N ELEV 13 ft 4 m TWR 122.55 236.6 NAKHON SI THAMMARAT/Nakhon Si Thammarat
99° 56' 41" E

RWY	DIRECTION	THR	BEARING STRENGTH
01	06°	08° 31' 49" N 99° 56' 37" E	PCN 42/F/C/X/T
19	186°	08° 32' 57" N 99° 56' 45" E	
APRON			PCN 45/R/C/X/T

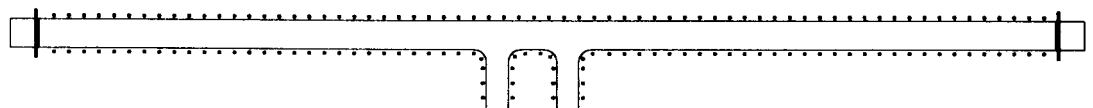


Remark : COORDINATE ARE WGS-84

MARKING AIDS RWY 01/19 AND EXIT TWY

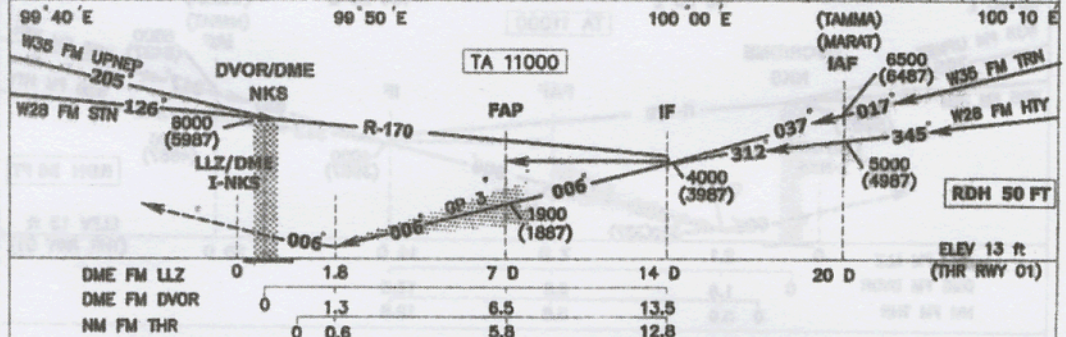
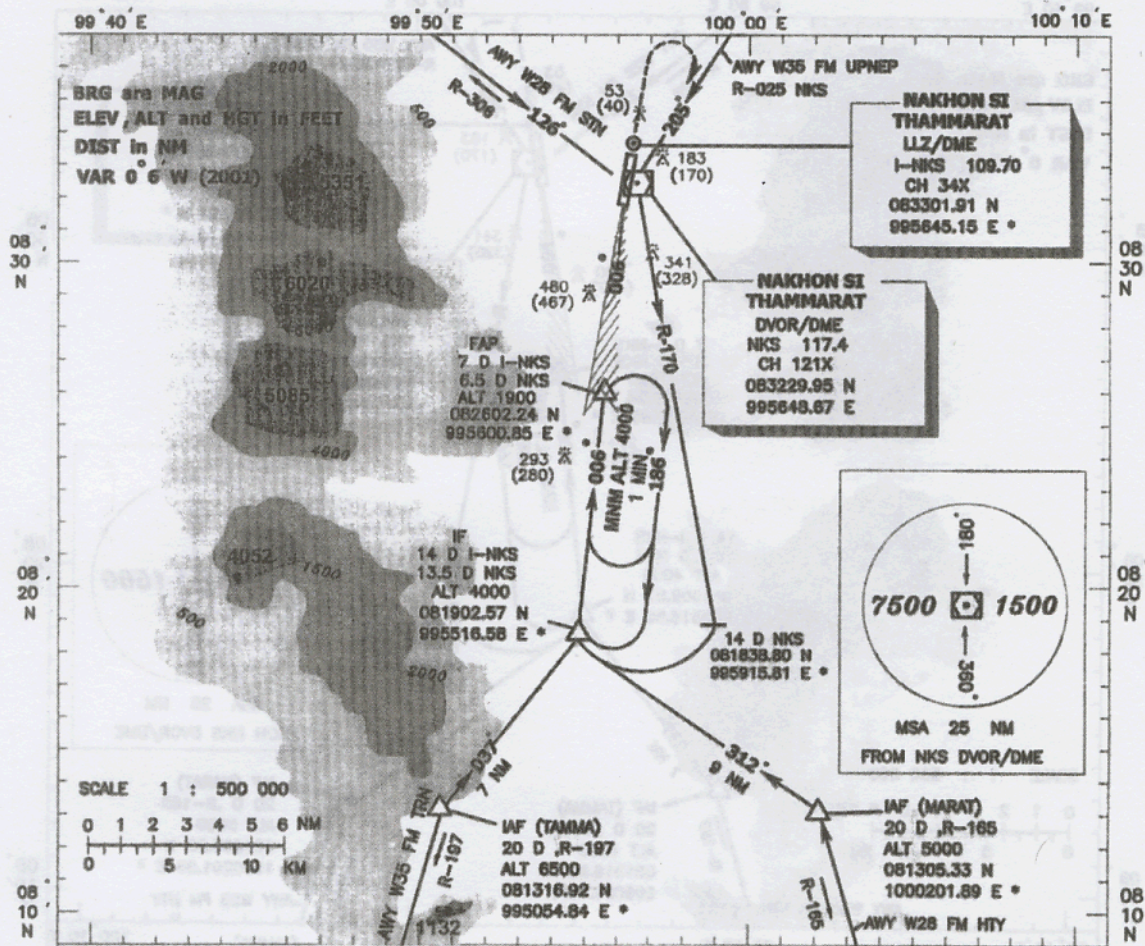


LIGHTING AIDS RWY 01/19 AND EXIT TWY



THIS PAGE INTENTIONALLY LEFT BLANK

INSTRUMENT APPROACH CHART - ICAO **AERODROME ELEV 13 ft** **HEIGHTS RELATED TO AERODROME ELEV** **APP : 129.60 ,305.4** **TWR : 122.55 ,236.6** **NAKHON SI / Nakhon si THAMMARAT / Thammarat** **ILS / DME RWY 01**



MISSED APPROACH : Climb on track 006 direct to 2000(1987) ft then turn right climbing to 4000(3987) ft then back to FAP 4000(3987) ft and hold.

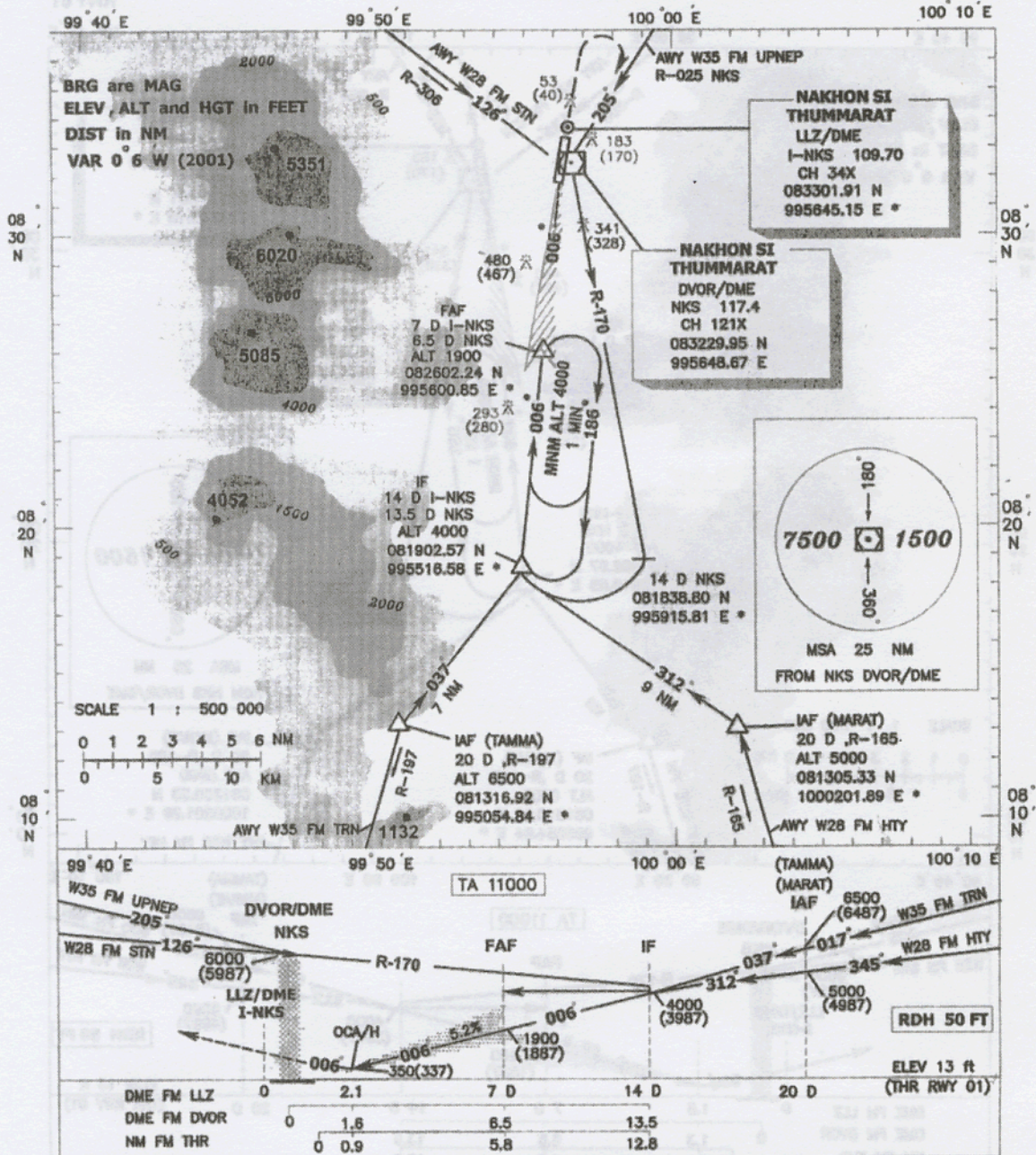
OCA / H		A	B	C	D
Straight in approach	Cat 1	220 (207)	230 (217)	240 (227)	250 (237)
		Circling			
		670(657)	760 (747)	975 (962)	

INSTRUMENT
APPROACH
CHART - ICAO

AERODROME ELEV 13 ft
HEIGHTS RELATED TO
AERODROME ELEV

APP : 129.60 ,305.4
TWR : 122.55 ,236.6

NAKHON SI / Nakhon si
THAMMARAT / Thammarat
LLZ / DME
RWY 01



MISSED APPROACH : Climb on track 006 direct to 2000(1987) ft then turn right climbing to 4000(3987) ft then back to FAF 4000(3987) ft and hold.

		Distance				3 D	4 D	5 D	6 D				
OCA / H	LLZ/DME	A	B	C	D	Altitude (Height)	630 (817)	950 (937)	1270 (1257)	1585 (1572)			
		350(337)				GS (kt)	100	120	140	160	180	200	
Circling		ONLY		670(657)	760 (747)	975 (962)	Rate of descent (ft/min)	525	630	740	845	950	1055
FAF - MAPt 4.9 NM							2:56	2:27	2:06	1:50	1:38	1:33	