

AERODROME CHART-ICAO

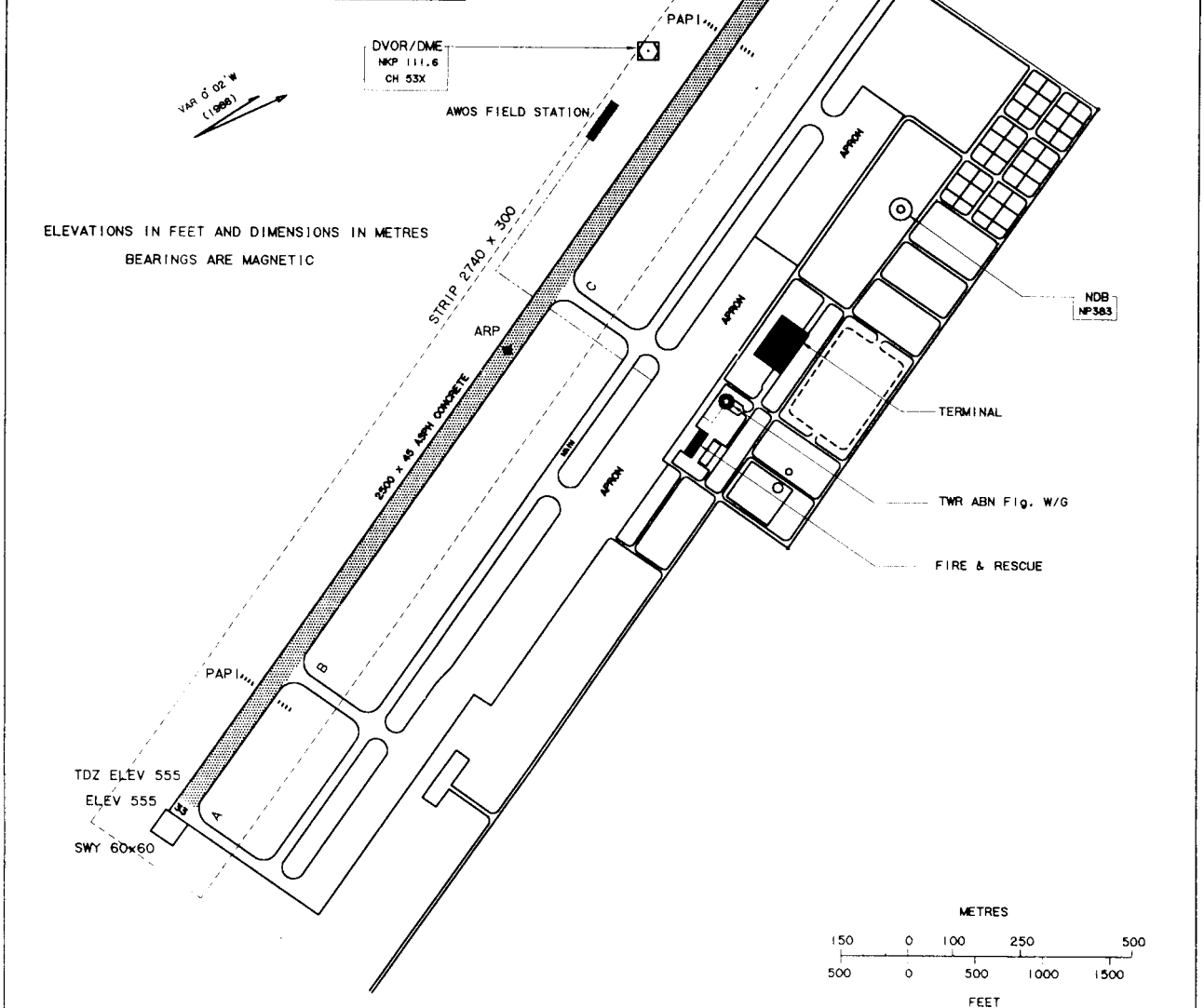
17° 23' 07" N
104° 36' 31" E

ELEV 587 ft
179 m

TWR 122.5

NAKHON PHANOM/Nakhon Phanom

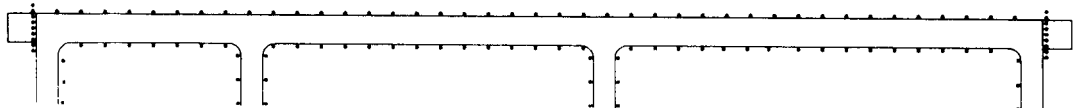
RWY	DIRECTION	THR	BEARING STRENGTH
15	145°	17° 23' 34.95" N 104° 36' 10.44" E	PCN 61/F/C/X/T
33	325°	17° 22' 28.37" N 104° 36' 59.32" E	
APRON			PCN 61/R/C/X/T



MARKING AIDS RWY 15/33 AND EXIT TWY

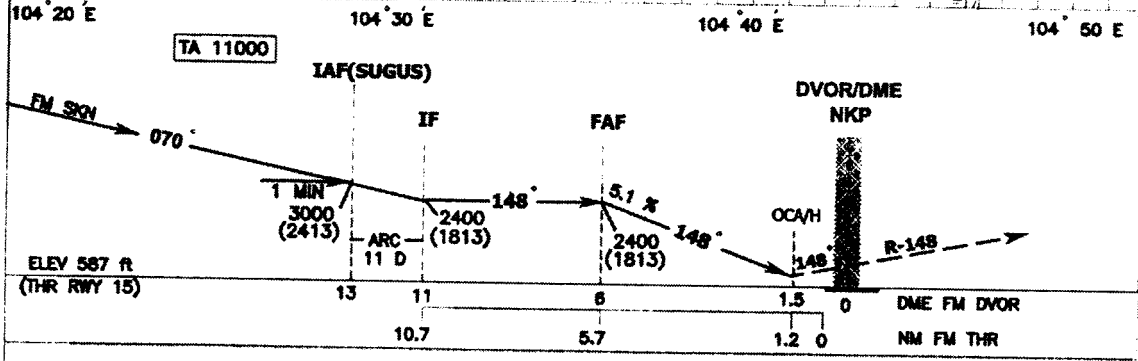
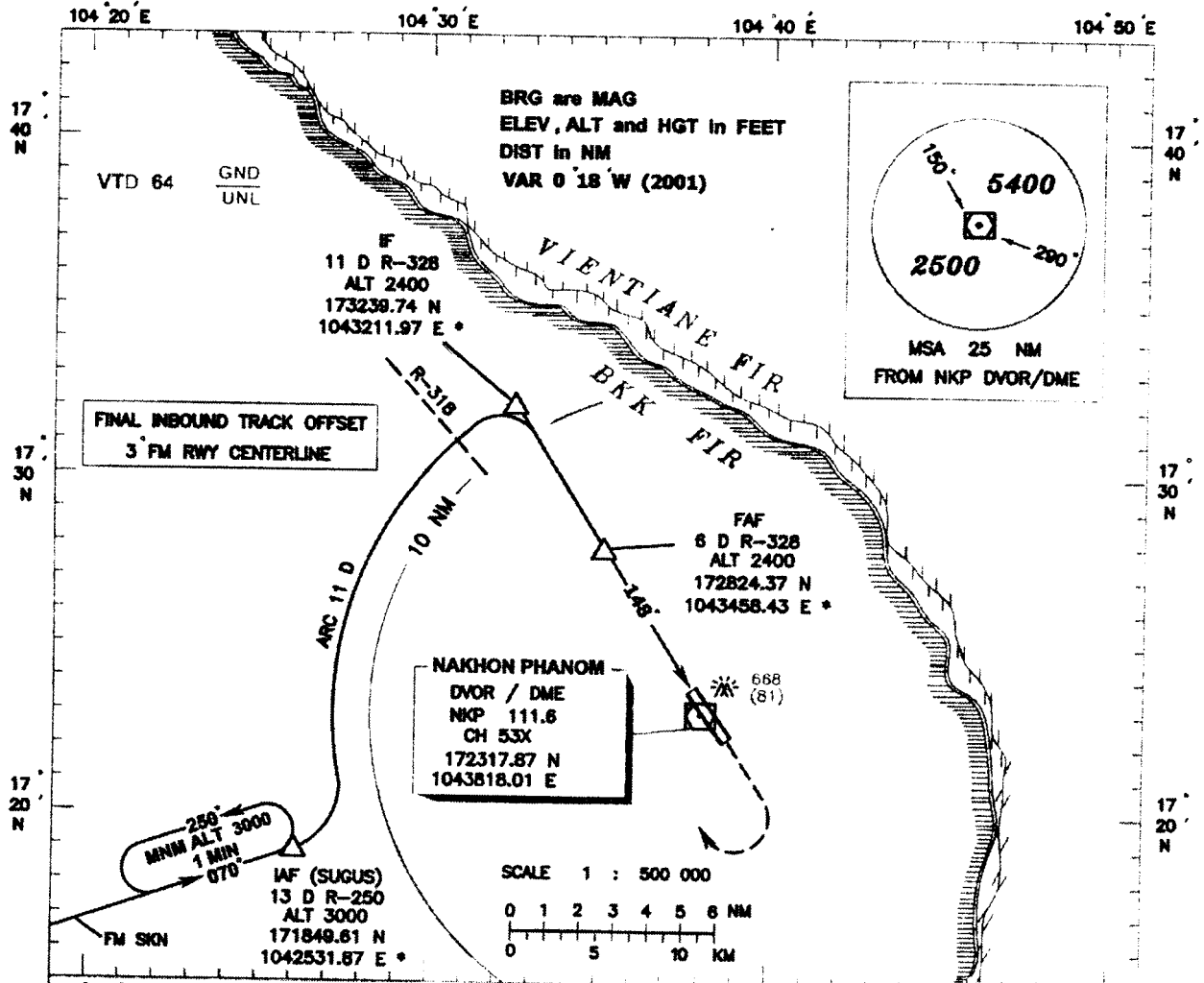


LIGHTING AIDS RWY 15/33 AND EXIT TWY



THIS PAGE INTENTIONALLY LEFT BLANK

INSTRUMENT AERODROME ELEV 587 ft **APP 123.35 ,284.0** **NAKHON PHANOM /Nakhon Phanom**
APPROACH HEIGHTS RELATED TO **TWR 122.5** **VOR/DME**
CHART - ICAO AERODROME ELEV **RWY 15**



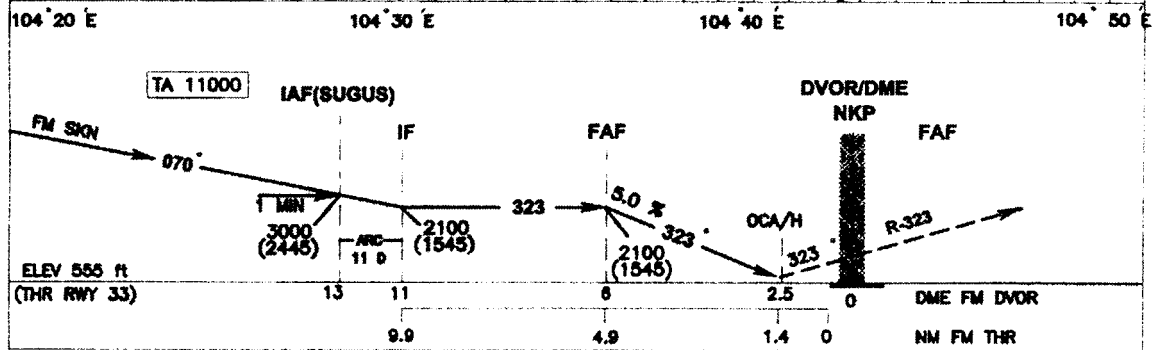
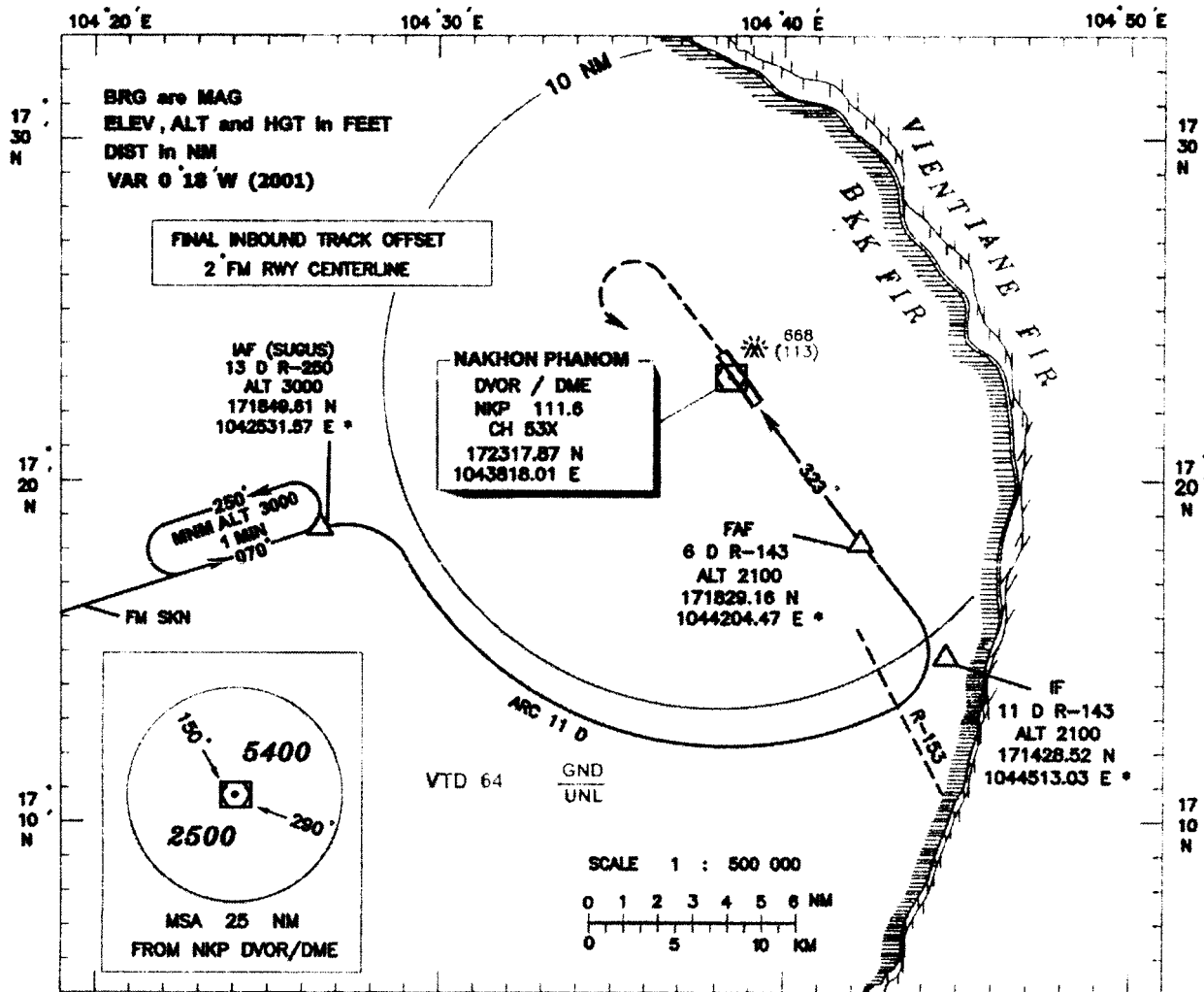
MISSED APPROACH : Climb on track 148 to the DVOR/VOR ,then climb on R-148 to 2000(1413) ft, then turn right climbing to 3000(2413) ft and back to IAF 3000(2413) ft and hold.

OCA/H	Distance				2 D	3 D	4 D	5 D
	A	B	C	D	Altitude(Height)			
Straight-in approach	1010(423)				1165 (578)	1475 (888)	1785 (1198)	2095 (1508)
Circling	1085(498)	1185 (598)	1285 (698)	Rate of descent (ft./min)	100	120	140	160
					180	180	200	825

INSTRUMENT AERODROME ELEV 587 ft
APPROACH HEIGHTS RELATED TO
CHART - ICAO THR RWY 33 ELEV 555 ft

APP 123.35 284.0
TWR 122.5

NAKHON PHANOM /Nakhon Phanom
VOR/DME
RWY 33



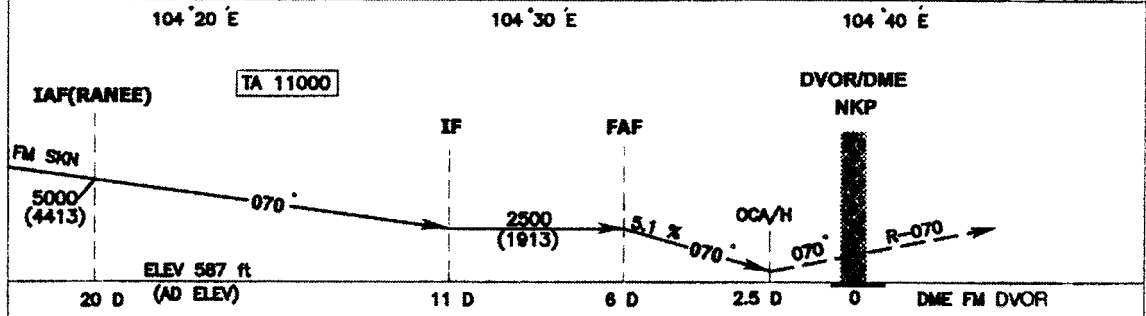
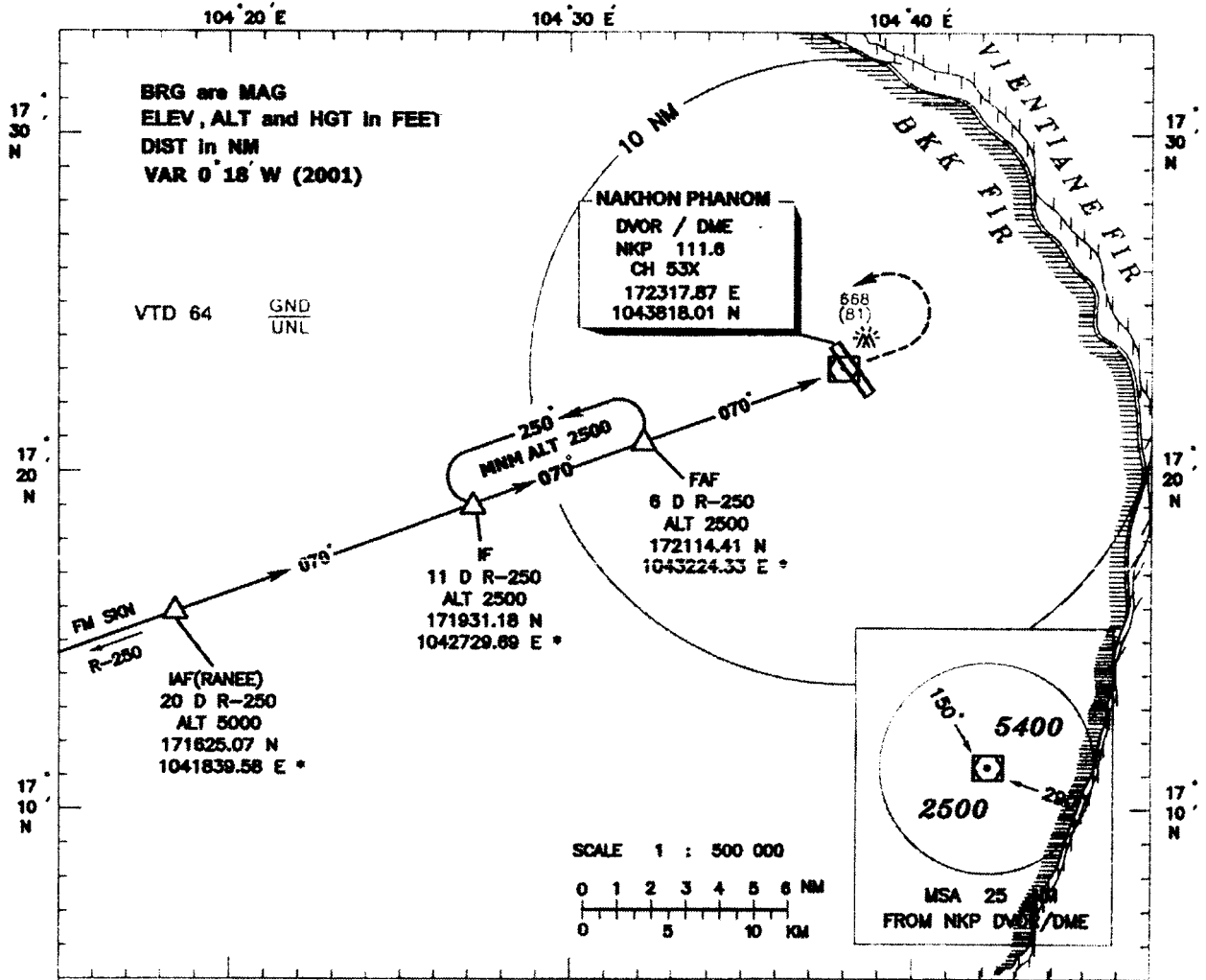
MISSED APPROACH: Climb on track 323° to the DVOR/DME, then climb on R-323 to 1500(946) ft, then turn left climbing to 3000(2445) ft and back to IAF 3000(2445) ft and hold.

OCA/H	Distance				Altitude(Height)	3 D	4 D	5 D
	A	B	C	D				
						1200 (845)	1500 (945)	1800 (1245)
Straight-in approach	1045(490)				Ca (kt)	100 120	140 160	180 200
Circling	1080(525)	1185 (630)	1285 (730)	Rate of descent (ft/min)	505	610	710	810 910 1010

INSTRUMENT AERODROME ELEV 587 ft
APPROACH HEIGHTS RELATED TO
CHART - ICAO AERODROME ELEV

APP 123.35 ,284.0
 TWR 122.5

NAKHON PHANOM /Nakhon Phanom
VOR/DME
RWY 15/33

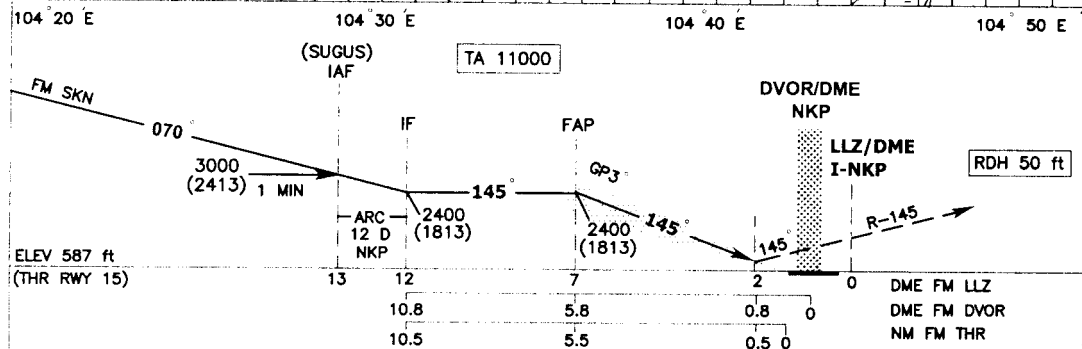
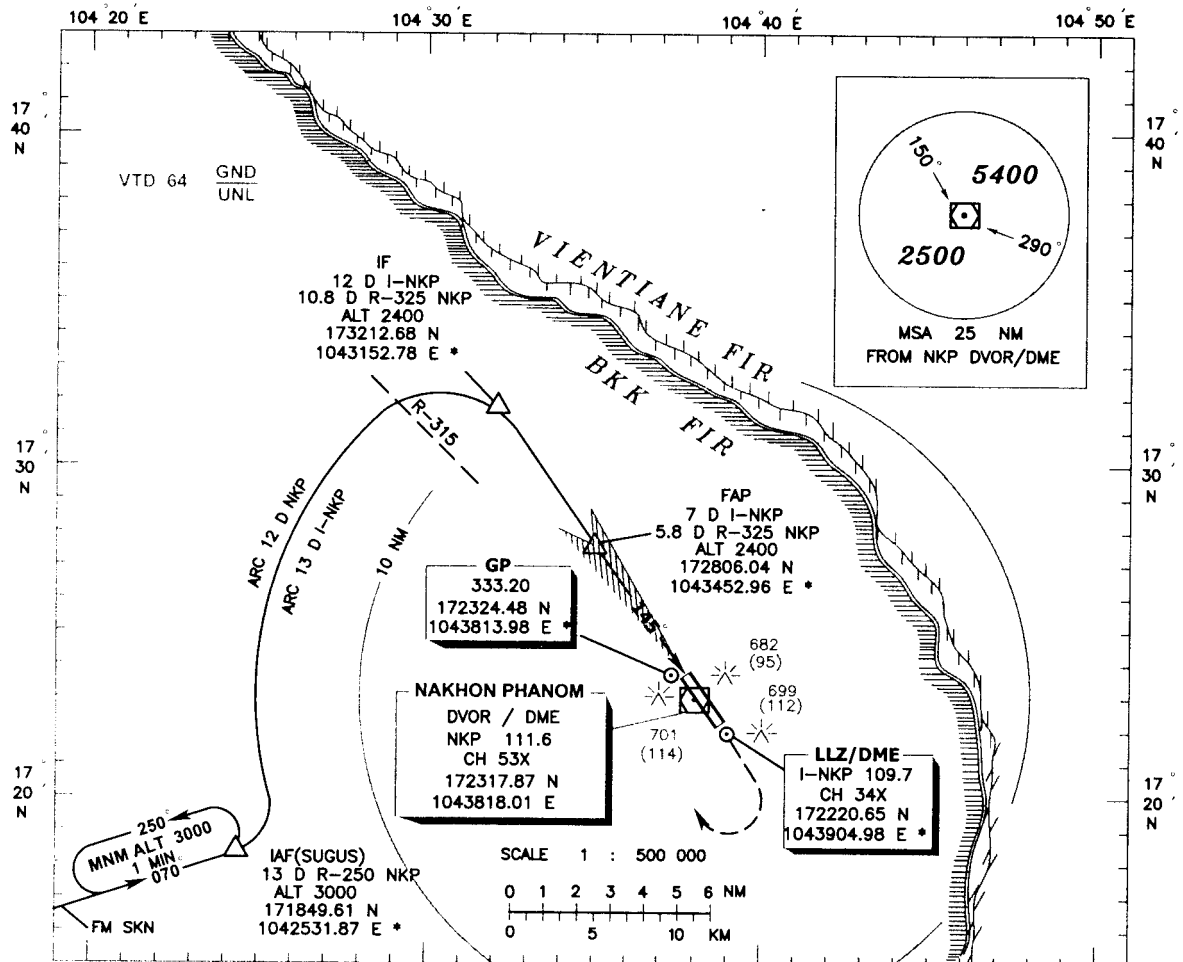


MISSED APPROACH : At 2.5 D ,climb straight ahead when over DVOR/DME climb on R-070 until reaching 1500(913) ft and turn left back to FAF 2500(1913) ft and hold.

		Distance				2 D	3 D	4 D	5 D
		Altitude(Height)				1255 (888)	1565 (978)	1875 (1288)	2185 (1598)
OCA/H	A	B	C	D	Gs (kt)				
					100	120	140	160	180
Straight-in approach	Not Authorized				Rate of descent (ft / min)				
					515	620	725	825	930
Circling	1085(488)	1185 (598)	1285 (698)		FAF-MAPT 3.5 NM (min : s)				
					2:08	1:46	1:30	1:19	1:10

THIS PAGE INTENTIONALLY LEFT BLANK

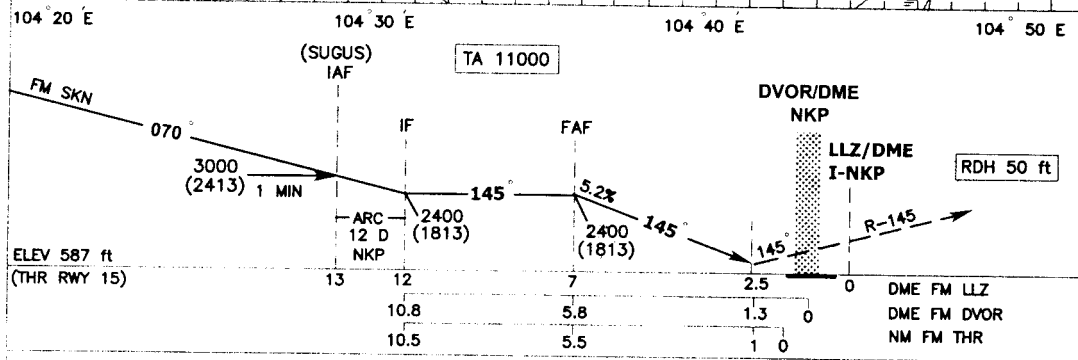
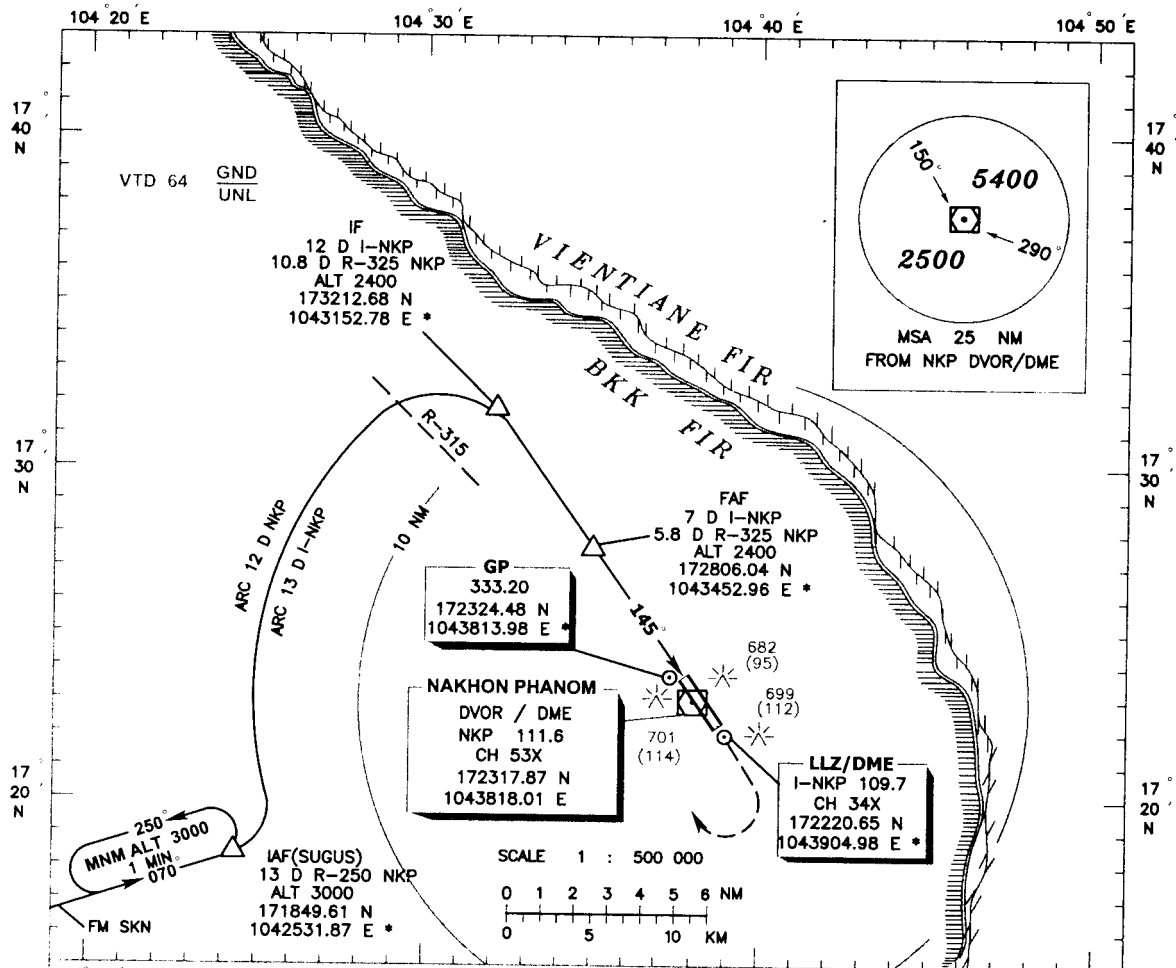
INSTRUMENT AERODROME ELEV 587 ft **APP 123.35 ,284.0** **NAKHON PHANOM /Nakhon Phanom**
APPROACH HEIGHTS RELATED TO **TWR 122.5** **ILS/DME**
CHART - ICAO **AERODROME ELEV** **RWY 15**



MISSED APPROACH : Climb on track 145° to 1500(913) ft ,then turn right continuing climb to 3000(2413) ft and back to IAF 3000(2413) ft and hold.

OCA/H		A	B	C	D
Straight - in approach	Cat I	800(213)			
Circling		1085(498)	1185(598)	1285(698)	

INSTRUMENT AERODROME ELEV 587 ft **APP 123.35 ,284.0** **NAKHON PHANOM /Nakhon Phanom**
APPROACH HEIGHTS RELATED TO **TWR 122.5** **LLZ/DME**
CHART - ICAO AERODROME ELEV **RWY 15**



MISSED APPROACH : Climb on track 145 to 1500(913) ft ,then turn right continuing climb to 3000(2413) ft and back to IAF 3000(2413) ft and hold.

OCA/H	A	B	C	D	Distance (I-NKP)	3 D	4 D	5 D	6 D		
Straight - in approach - LLZ/DME ONLY	950(363)				Altitude (Height)	1115 (528)	1430 (843)	1750 (1163)	2070 (1483)		
					Ground Speed (GS) knot	90	100	120	140	160	180
Circling	1085(498)	1185 (598)	1285 (698)		Rate of descent (ft/min)	480	525	630	740	840	950
					FAF-MAPT 4.5 NM (min/s)	3:0	2:42	2:15	1:56	1:41	1:30