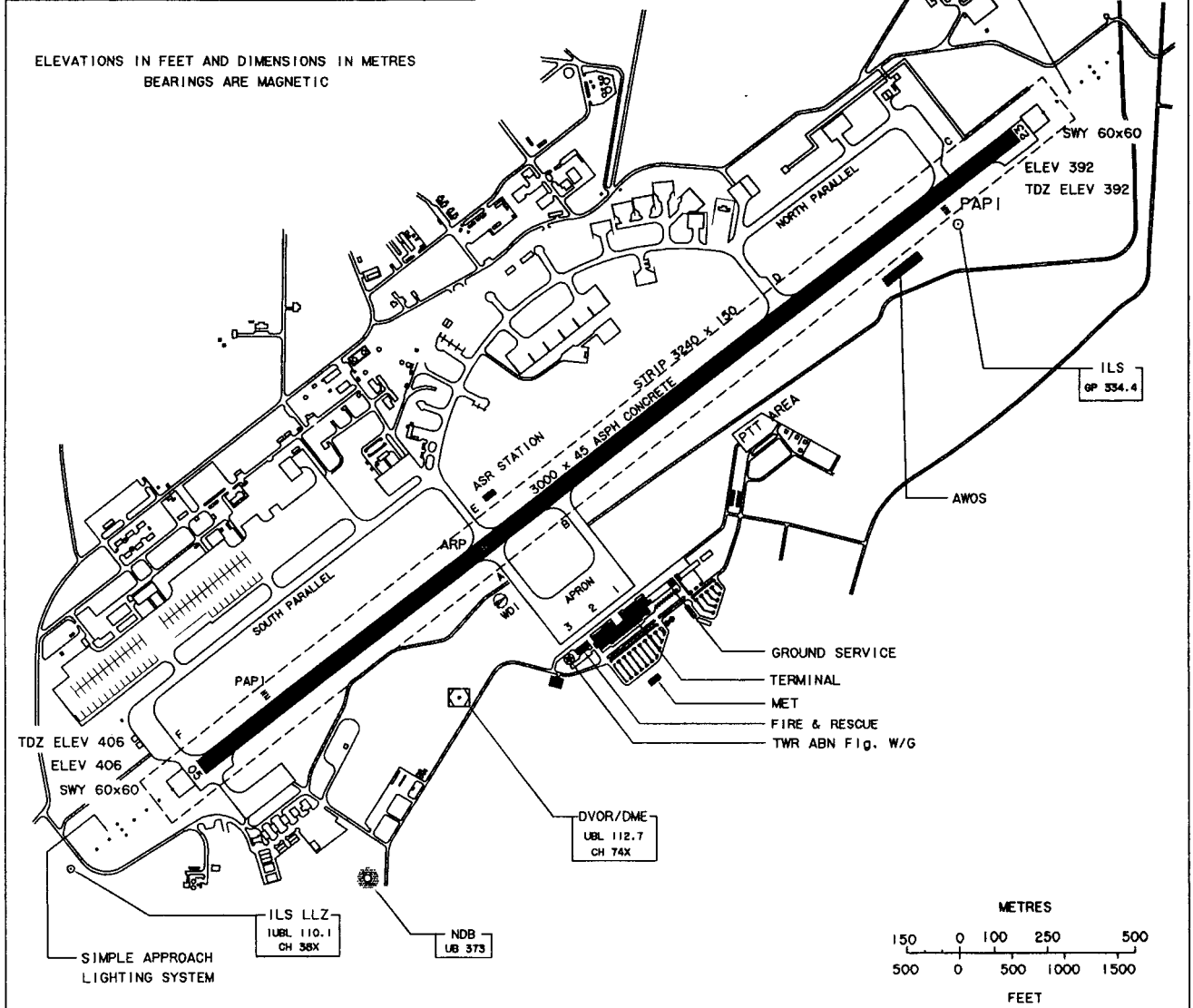


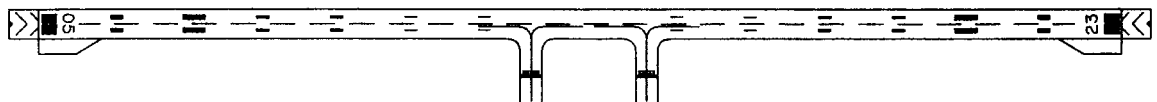
AERODROME CHART-ICAO 15° 15' 05" N ELEV 406 ft TWR 122.5
104° 52' 13" E 124 m 274.5 UBUON RATCHATHANI/Ubon Ratchathani

RWY	DIRECTION	THR	BEARING STRENGTH
05	52°	15° 14' 34" N 104° 51' 33" E	PCN 61/F/C/X/T runway and taxiway A,B
23	232°	15° 15' 35" N 104° 52' 52" E	
APRON			PCN 61/R/C/X/T

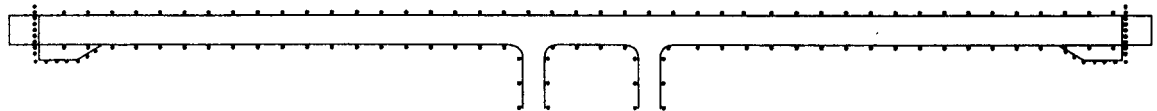


Remark : COORDINATE ARE WGS-84

MARKING AIDS RWY 05/23 AND EXIT TWY



LIGHTING AIDS RWY 05/23 AND EXIT TWY



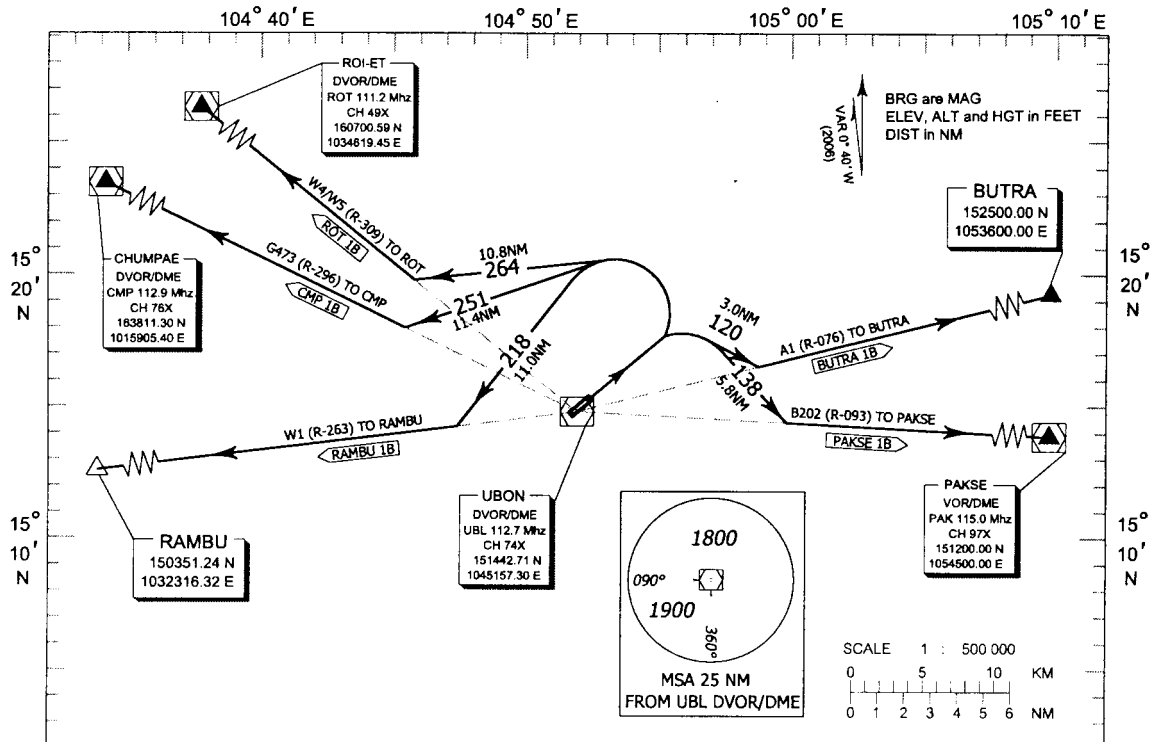
150 0 100 250 500 METRES
500 0 500 1000 1500 FEET

STANDARD INSTRUMENT DEPARTURE CHART
(SID) - ICAO

UBON RATCHATANI / Ubon (VTUU)
RWY 05

APP : 123.5 , 257.8
TWR : 119.9 , 274.5

RAMBU 1B, ROT 1B
CMP 1B, BUTRA 1B
PAKSE 1B



COMMUNICATION FAILURE PROCEDURE

- Squawk A7600
- Comply with last assigned level until next reporting point then climb to flight plan cruising level.

Warning

- No Turn before Departure End of Runway
- Procedure Design Gradient = 3.3 %
- Max IAS 230 kts for turning after departure

RAMBU ONE BRAVO : AFTER DEPARTURE CLIMB ON RWY HEADING UNTIL 1200FT OR ABOVE THEN TURN LEFT HEADING 218 TO INTERCEPT AND PROCEED ON R-263 UBL TO RAMBU
(RAMBU 1B)

CHUMPAE ONE BRAVO : AFTER DEPARTURE CLIMB ON RWY HEADING UNTIL 1200FT OR ABOVE THEN TURN LEFT HEADING 251 TO INTERCEPT AND PROCEED ON R-296 UBL TO CHUMPAE DVOR/DME
(CMP 1B)

ROIET ONE BRAVO : AFTER DEPARTURE CLIMB ON RWY HEADING UNTIL 1200FT OR ABOVE THEN TURN LEFT HEADING 264 TO INTERCEPT AND PROCEED ON R-309 UBL TO ROIET DVOR/DME
(ROT 1B)

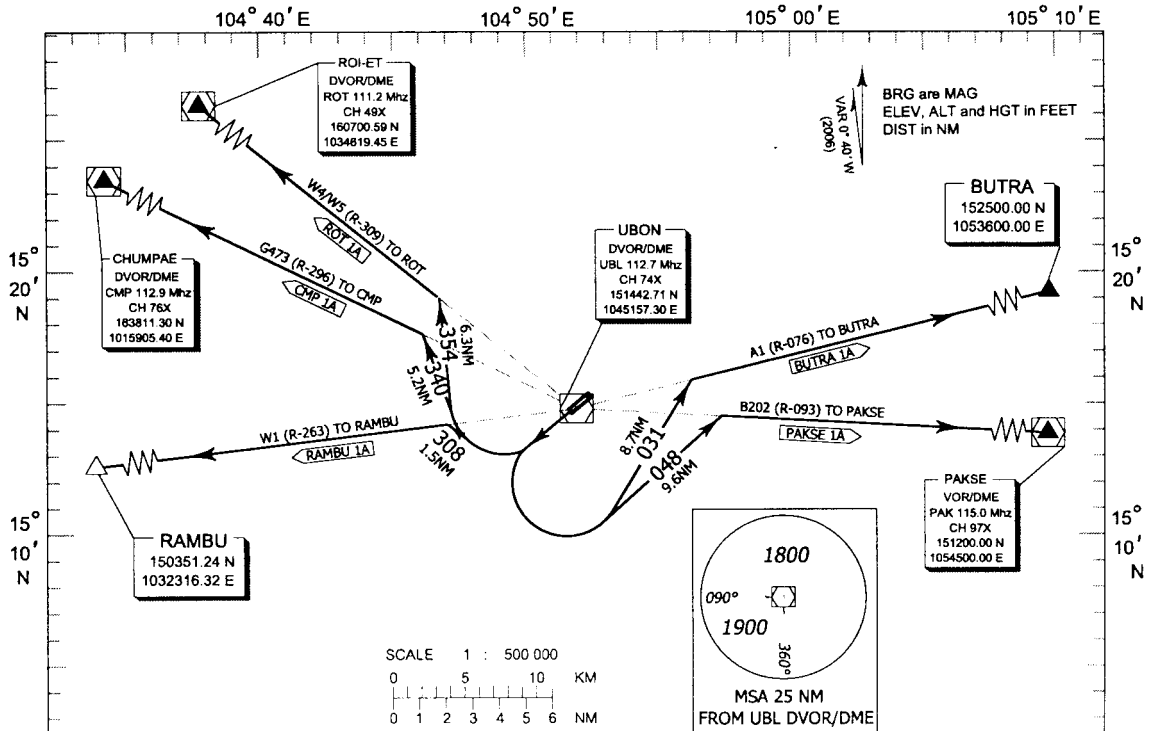
BUTRA ONE BRAVO : AFTER DEPARTURE CLIMB ON RWY HEADING UNTIL 1400FT OR ABOVE THEN TURN RIGHT HEADING 120 TO INTERCEPT AND PROCEED ON R-076 UBL TO BUTRA
(BUTRA 1B)

PAKSE ONE BRAVO : AFTER DEPARTURE CLIMB ON RWY HEADING UNTIL 1400FT OR ABOVE THEN TURN RIGHT HEADING 138 TO INTERCEPT AND PROCEED ON R-093 TO PAKSE VOR/DME
(PAKSE 1B)

STANDARD INSTRUMENT DEPARTURE CHART
(SID) - ICAO

UBON RATCHATANI / Ubon (VTUU)
RWY 23
RAMBU 1A, ROT 1A
CMP 1A, BUTRA 1A
PAKSE 1A

APP : 123.5 , 257.8
TWR : 119.9 , 274.5



COMMUNICATION FAILURE PROCEDURE
- Squawk A7600
- Comply with last assigned level until next reporting point then climb to flight plan cruising level.

Warning
- No turn before Departure End of Runway
- Procedure Design Gradient = 4.9 % to 1200ft
- Max IAS 230 kts for turning after departure

RAMBU ONE ALPHA : AFTER DEPARTURE CLIMB ON RWY HEADING UNTIL 1200FT OR ABOVE THEN TURN RIGHT HEADING 308 TO INTERCEPT AND PROCEED ON R-263 UBL TO RAMBU
(RAMBU 1A)

CHUMPAE ONE ALPHA : AFTER DEPARTURE CLIMB ON RWY HEADING UNTIL 1200FT OR ABOVE THEN TURN RIGHT HEADING 340 TO INTERCEPT AND PROCEED ON R-296 UBL TO CHUMPAE DVOR/DME
(CMP 1A)

ROIET ONE ALPHA : AFTER DEPARTURE CLIMB ON RWY HEADING UNTIL 1200FT OR ABOVE THEN TURN RIGHT HEADING 354 TO INTERCEPT AND PROCEED ON R-309 UBL TO ROIET DVOR/DME
(ROT 1A)

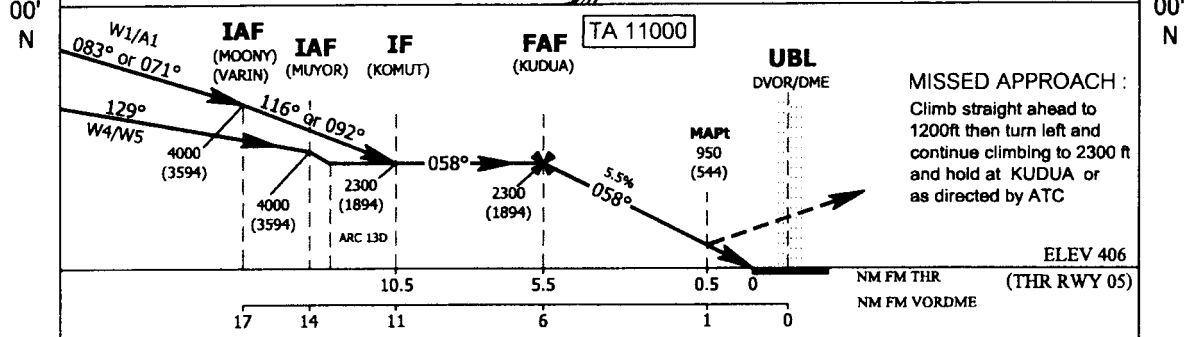
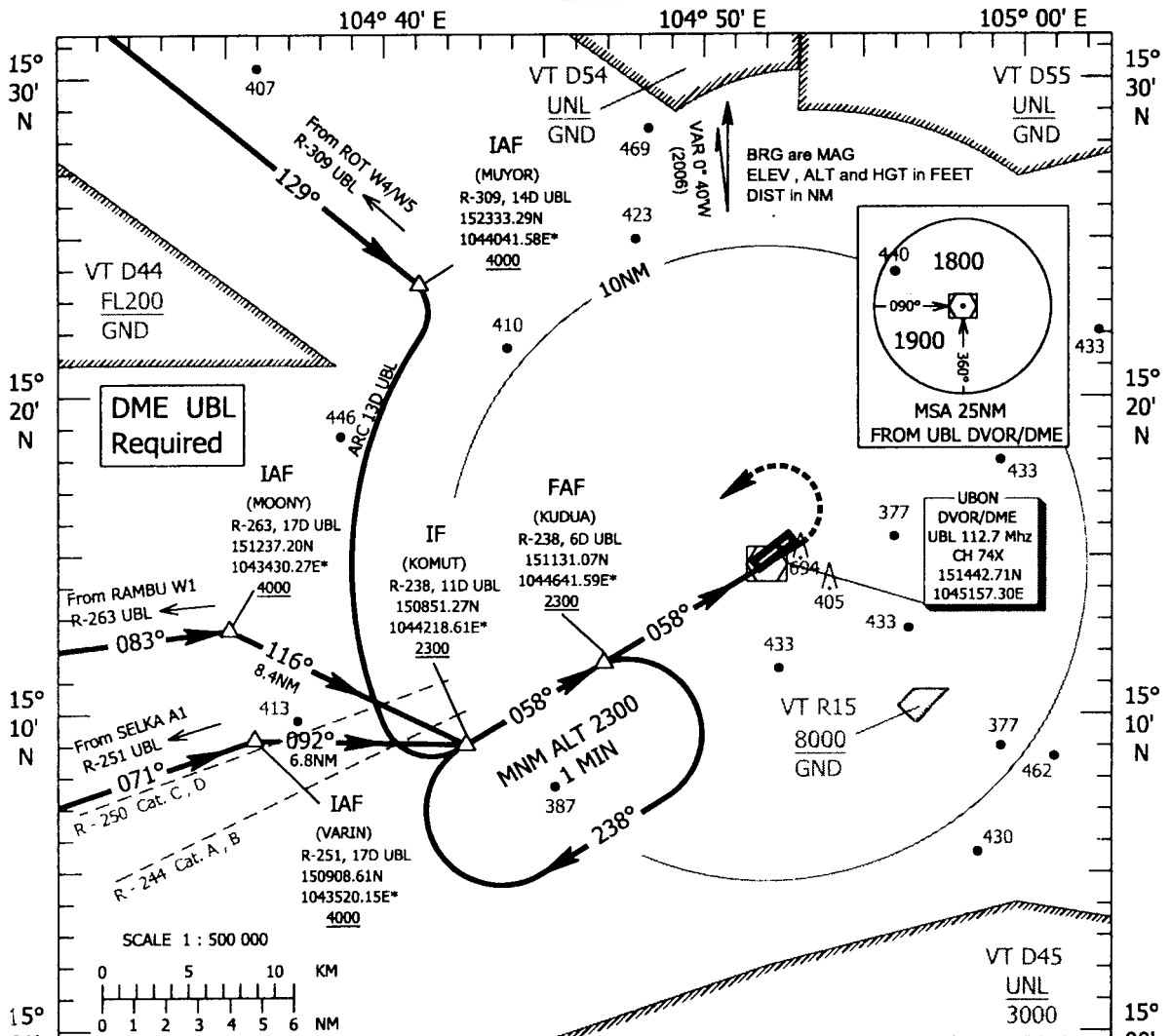
BUTRA ONE ALPHA : AFTER DEPARTURE CLIMB ON RWY HEADING UNTIL 1200FT OR ABOVE THEN TURN LEFT HEADING 031 TO INTERCEPT AND PROCEED ON R-076 UBL TO BUTRA
(BUTRA 1A)

PAKSE ONE ALPHA : AFTER DEPARTURE CLIMB ON RWY HEADING UNTIL 1200FT OR ABOVE THEN TURN LEFT HEADING 048 TO INTERCEPT AND PROCEED ON R-093 TO PAKSE VOR/DME
(PAKSE 1A)

INSTRUMENT AERODROME ELEV 406 ft
APPROACH HEIGHTS RELATED TO CHART - ICAO AERODROME ELEV

UBON RATCHATHANI / Ubon (VTUU)
VOR RWY05

APP : 123.5, 257.8
TWR : 119.9, 274.5

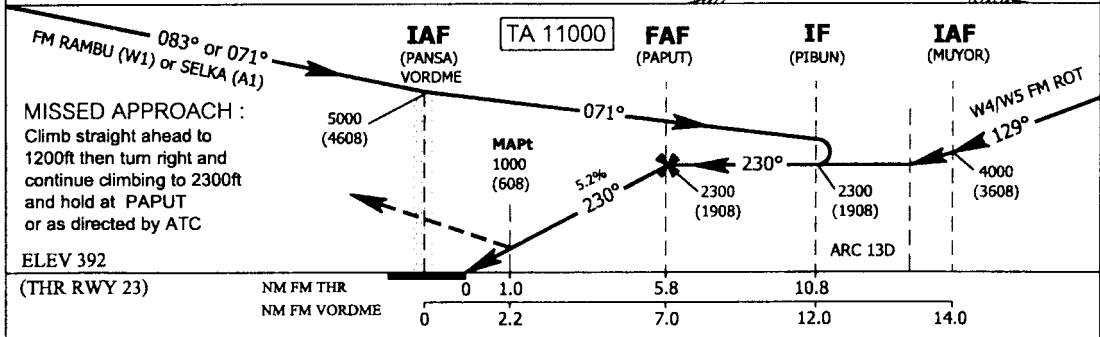
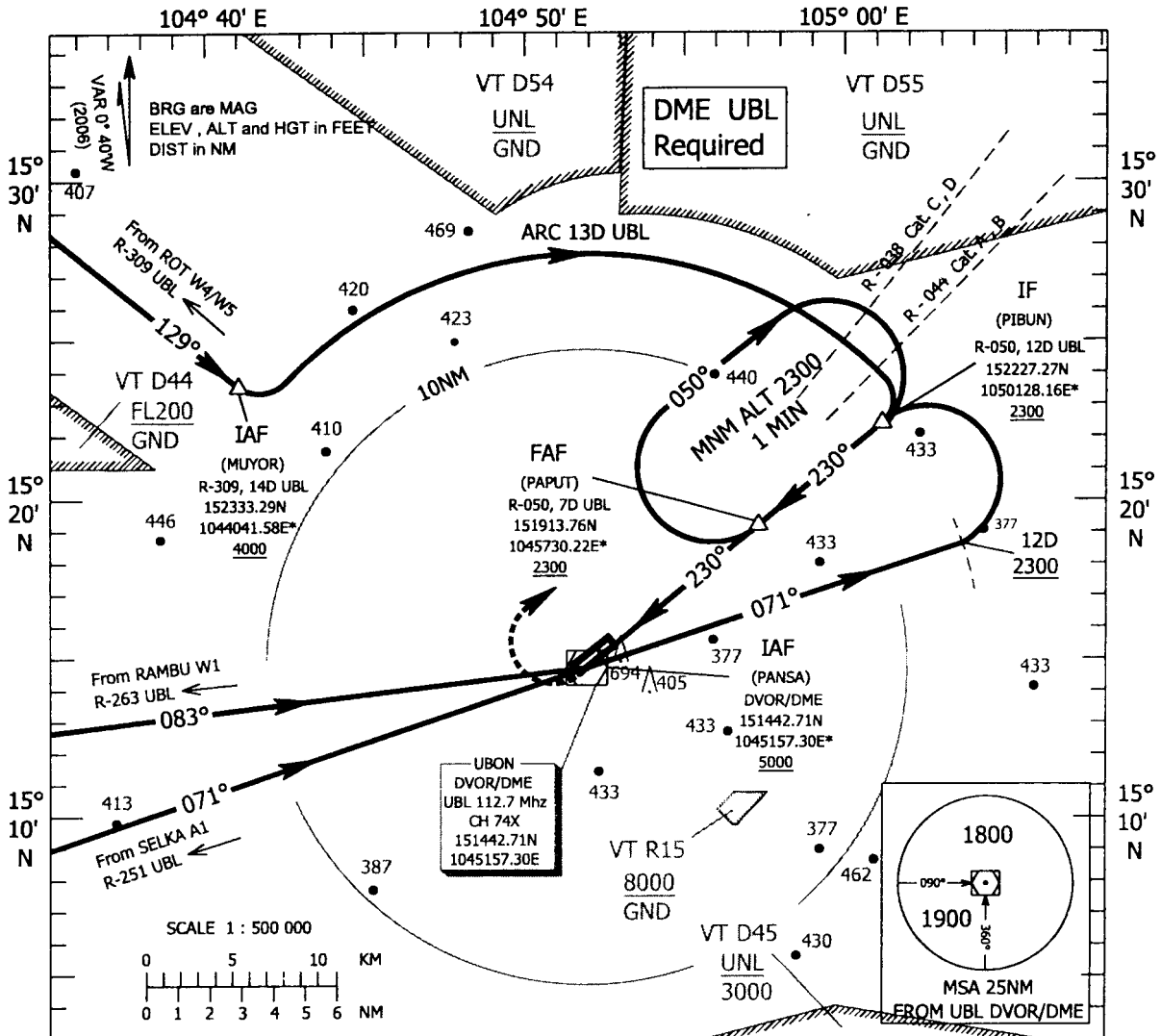


Cat. of AFCT	OCA/H				Distance (UBL)	6DME	5DME	4DME	3DME		
	A	B	C	D							
Straight-in Approach	950 (544)				Altitude	2300	1970	1630	1300		
					Ground Speed (GS)	kt	100	120	140	160	180
Circling	1000 (594)		1100 (694)		Time (FAF - MAPt, 5.0NM)	m:s	3:00	2:30	2:09	1:53	1:40
					Rate of Descent	ft/min	557	668	780	891	1003

INSTRUMENT AERODROME ELEV 406 ft
APPROACH HEIGHTS RELATED TO
CHART - ICAO THR RWY 23 ELEV 392 ft

UBON RATCHATHANI / Ubon (VTUU)
VOR RWY23

APP : 123.5 , 257.8
TWR : 119.9 , 274.5

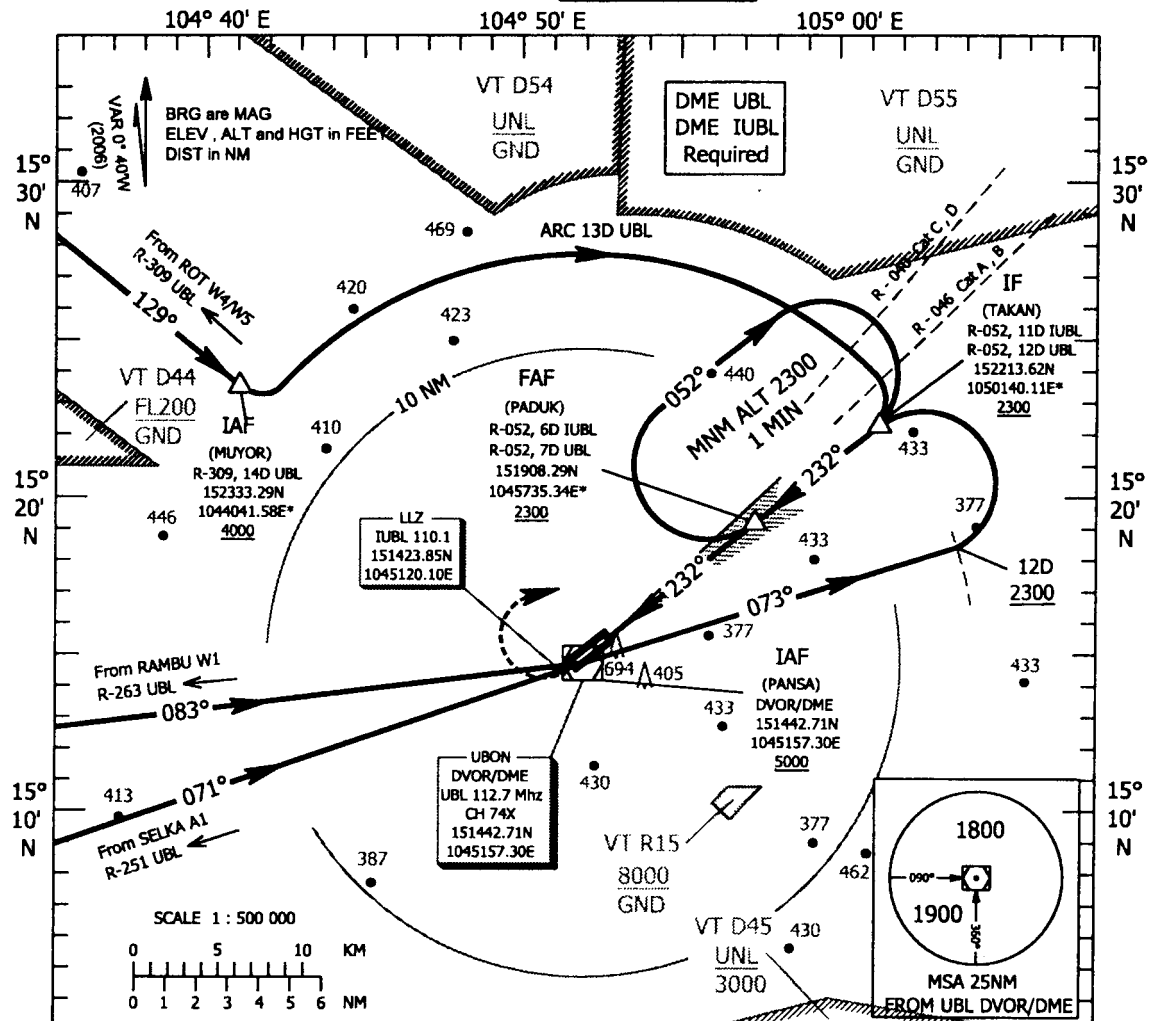


OCA/H					Distance (UBL)				3DME	4DME	5DME	6DME		
Cat. of ACFT	A	B	C	D	Altitude				1020	1340	1660	1980		
Straight - in Approach	1000 (608)				Ground Speed (GS)				kt	100	120	140	160	180
					Time (FAF - MAPt, 4.8NM)				m:s	2:53	2:24	2:03	1:48	1:36
Circling	1000 (608)		1100 (708)		Rate of Descent				ft/min	531	637	743	849	955

INSTRUMENT AERODROME ELEV 406 ft
 APPROACH HEIGHTS RELATED TO
 CHART - ICAO THR RWY 23 ELEV 392 ft

UBON RATCHATHANI / Ubon (VTUU)
 ILS or LLZ RWY23

APP : 123.5 , 257.8
 TWR : 119.9 , 274.5



MISSED APPROACH :
 Climb straight ahead to 1200ft then turn right and continue climbing to 2300ft and hold at PADUK or as directed by ATC

ELEV 392 (THR RWY 23)

		0	1.2	5.8	10.8	
NM FM THR		0	1.2	5.8	10.8	
NM FM GP/DME		0	1.4	6.0	11.0	
NM FM VOR/DME		0	2.4	7.0	12.0	14.0

OCA/H					Distance (GP/DME)	3DME	4DME	5DME	6DME			
Cal. of ACFT	A	B	C	D	Altitude	1340	1660	1980	2300			
Straight - in Approach	Cal. I	570 (178)	580 (188)	590 (198)	600 (208)	Ground Speed (GS)	kt	100	120	140	160	180
	GP INOP	840 (448)					Time (FAF - MAPt, 4.6NM)	m:s	2:46	2:18	1:58	1:44
Circling		1000 (608)	1100 (708)			Rate of Descent	f/min	531	637	743	849	955