

ENR 2.2 OTHER REGULATED AIRSPACE

1. VFR ENTRY AND EXIT PROCEDURES IN BANGKOK CONTROL ZONE

1.1 General

- 1.1.1 The VFR entry and exit procedures are designed to enhance the uniformity of light aircraft and helicopter operations under VFR in Bangkok control zone.
- 1.1.2 VFR entry and exit procedure charts are the recommended flight paths and altitudes for the purpose of air traffic management.
- 1.1.3 Adherence to charted flight paths and altitudes is not mandatory. ATC may assign flight paths and altitudes, however, pilot has final authorities to decide whether he or she would comply with it but shall comply with Visual flight rules (VFR).
- 1.1.4 There is no substitute for alertness while operating under VFR. Pilots still have full responsibility to see and avoid other traffic and maintain adequate distance from clouds.
- 1.1.5 The VFR entry and exit procedures are to be flown only in daylight hours.

1.2 VFR ENTRY AND EXIT PROCEDURES FOR LIGHT AIRCRAFT

- 1.2.1 The procedures for light aircraft are designed for aircraft with speed less than 130 knots.
- 1.2.2 Light aircraft with speed of more than 130 knots may be given departure and arrival instructions and radar vectoring for providing separation.
- 1.2.3 Table of VFR reporting points for light aircraft within Bangkok Control Zone

No.	Reporting point	Landmark	Radial/DME from BKK VOR	Lat/Long
1	3 NM WEST	Supreme General Headquarter (Dome shape)	R317/3.14D	135556N1003295E
2	5 NM WEST	Baan Uea artorn Condominium, Bangkradee, Patumthani	R331/5.5D	135815N1003254E
3	10 NM WEST	Kanchanapisek Rd. crossing Pra-u-dom canal	R298/10.5 D	135843N 1002618E
4	AYUTTHAYA	Preedee Panomyong Bridge (Ayutthaya Downtown)	R356/28.32D	142200N1003400E
5	BANGBUATHONG	the Outer Ring West Toll Way crossing the Highway 345	R284/10.15D	135610N1002540E
6	BANG NAM PREAW	District Office of Bang Nam Prew	R097/26.4D	135014N1010210E
7	BANGPAKONG	Bang Pa Kong Delta	R137/34.3D	132809N1005945E
8	HINKONG	Racetrack Ring Toll Way, Saraburi	R028/34.86D	142430N1005240E
9	JAKRIBONGKOT PALACE	-	R306/5D	135605N1003138E
10	LADBUALUANG	District Office of Ladbualueang	R314/23.5D	140957N1001814E
11	LADLUMKAEW	the Factory around the Outer Ring West Toll Way crossing Patumthani-Ladlumkaew Rd.	R319/12D	140245N1002746E
12	LUMLOOKKA	the Outer Ring East Toll Way crossing Lumlookka Rd.	R070/7.42D	135609N1004257E
13	KOHSRICHANG	Koh Srichang	R167/45.00D	130745N1004840E
14	KOH KRET	Koh Kret	R289/6D	135529N1002953E
15	KOH LAN	Koh Lan	R169/59D	125453N 1004649E
16	ONGKARAK	District Office of Ongkarak	R060/ 27.11D	140702N1010001E
17	PATUMTHANI	Patumthani Bridge (Crossing Chaopraya River)	R341/8.74D	140156N1003255E
18	SAMUTSAKORN	Mae Klong Delta	R221/27.48D	133300N1001700E
19	5 NM EAST (for VTBS)	-	R100/6.3D (from SVB VOR)	133832N1005014E
20	KLONGDAN (for VTBS)	Klongdan (Water Treatment System)	R156/10D (from SVB VOR)	133041N1004807E
21	PAKNAM (for VTBS)	Samuthprakarn Delta	R225/10D (from SVB VOR)	133244N1003653E
23	SUANLUANG (for VTBS)	Rama 9th Park	R290/5D (from SVB VOR)	134229N1003931E

1.2.4 VFR entry and exit procedures for light aircraft transition flight (overfly) (See ENR 2.2-3)

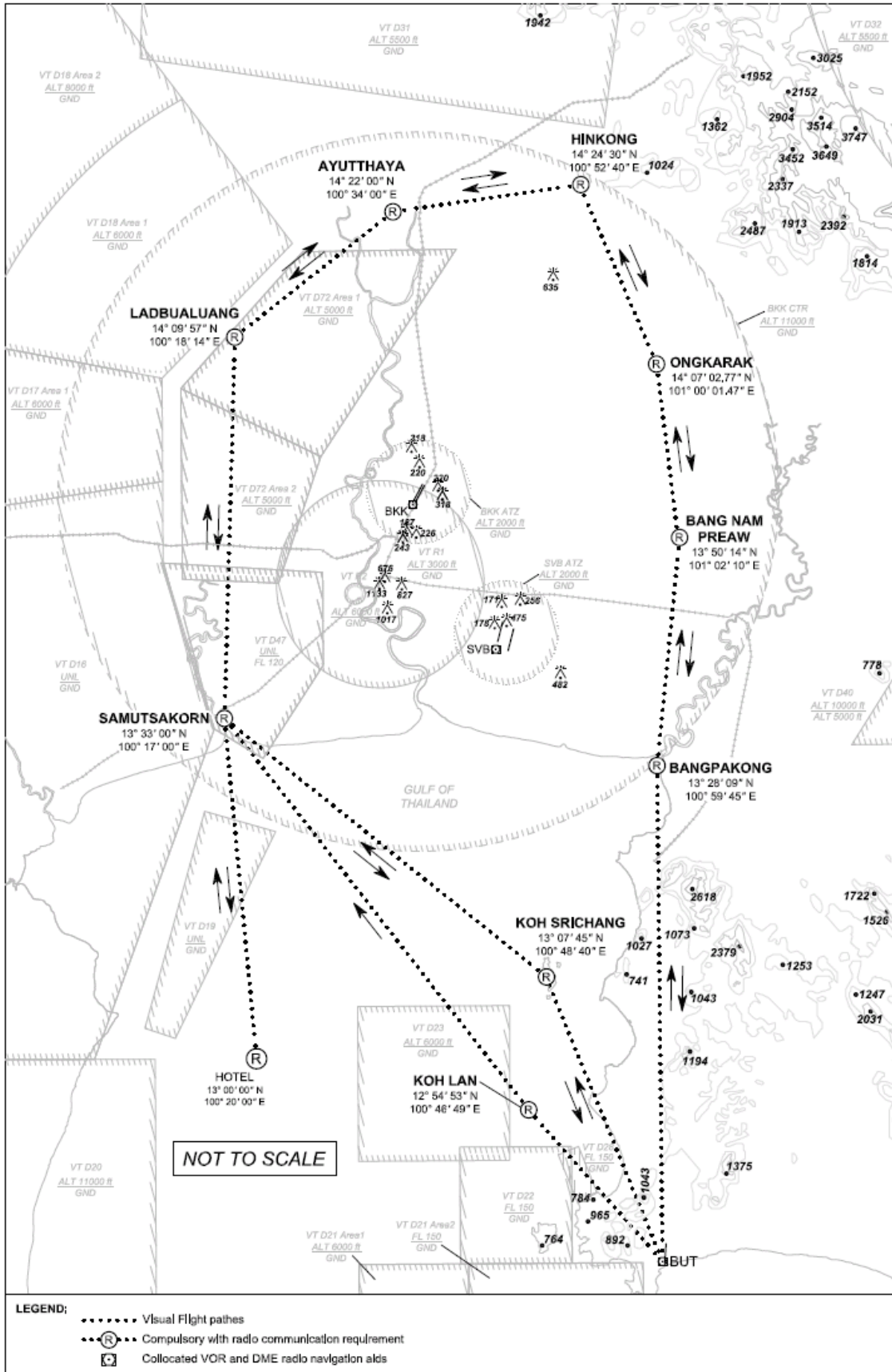
Direction of flight	Reporting point	Reporting point	Reporting point	Reporting point	Reporting point
From the NORTH to the SOUTH or SOUTHWEST	AYUTTHAYA	LADBUALUANG	SAMUTSAKORN		
From the NORTH to the SOUTH or SOUTHEAST	AYUTTHAYA	LADBUALUANG	SAMUTSAKORN	KOH SRI CHANG	
From the SOUTHEAST to the NORHT	KOH SRI CHANG	SAMUTSAKORN	LADBUALUANG	AYUTTHAYA	
From the SOUTH or SOUTHWEST to the NORHT	SAMUTSAKORN	LADBUALUANG	AYUTTHAYA		
From the WEST to the NORTH or NORTHEAST	LADBUALUANG	AYUTTHAYA	HINKONG		
From the NORTH or NORTHEAST to the WEST	HINKONG	AYUTTHAYA	LADBUALUANG		
From the NORTH or NORTHEAST to the SOUTHEAST (1)	HINKONG	AYUTTHAYA	LADBUALUANG	SAMUTSAKORN	KOH SRI CHANG
From the NORTH or NORTHEAST to the SOUTHEAST (2)	AYUTTHAYA	HINKONG	ONGKARAK	BANG NAM PREAW	BANG PAKONG
From the EAST to the NORTH or NORHTEAST	BANG NAM PREAW	ONGKARAK	HINKONG	AYUTTHAYA	
From the EAST to the SOUTH or SOUTHEAST	BANG NAM PREAW	BANG PAKONG	KOH SRI CHANG	SAMUTSAKORN	

VFR ENTRY AND EXIT
PROCEDURE
FOR LIGHT AIRCRAFT
CHART

AERODROME ELEV. 9 FT

APP : 122.35, 257.6
124.35, 262.5
125.2, 259.6
121.7
VTBD ATIS : 126.4, 344.6
VTBS ATIS : 127.8, 278.6

Bangkok/Control Zone
OVERFLY



1.2.5 VFR entry and exit procedures for light aircraft operating at Don Mueang International Airport (VTBD) (See ENR 2.2-5)

a) VFR exit procedures for VTBD RWY 21L and 21R

Direction of flight	Reporting point/ Recommended maximum altitude	Reporting point/ Recommended maximum altitude	Reporting point/ Recommended maximum altitude
To the NORTH	KOH KRET 1000 ft	AYUTTHAYA 2500 ft	
To the NORTHEAST	KOH KRET 1000 ft	AYUTTHAYA 2500 ft	HIN KONG 3500 ft
To the WEST	BANG BUA THONG 1000 ft		
To the SOUTHWEST	BANG BUA THONG 1000 ft	SAMUTSAKORN 2500 ft	
To the SOUTHEAST (1)	BANG BUA THONG 1000 ft	SAMUTSAKORN 2500 ft	KOH SRI CHANG 3500 ft
To the SOUTHEAST (2)	LUMLOOKKA 1000 ft	BANG NAM PREAW 1000 ft	BANG PAKONG 1500 ft
To the EAST	LUMLOOKKA 1000 ft	BANG NAM PREAW 1000 ft	

b) VFR exit procedures for VTBD RWY 03L and 03R

Direction of flight	Reporting point/ Recommended maximum altitude	Reporting point/ Recommended maximum altitude	Reporting point/ Recommended maximum altitude
To the NORTH	PATUMTHANI 1500 ft	AYUTTHAYA 2500 ft	
To the NORTHEAST	PATUMTHANI 1500 ft	AYUTTHAYA 2500 ft	HIN KONG 3500 ft
To the WEST	PATUMTHANI 1500 ft	LADLUMKAEW 1500 ft	
To the SOUTHWEST	PATUMTHANI 1500 ft	LADLUMKAEW 1500 ft	SAMUTSAKORN 3500 ft
To the SOUTHEAST (1)	LADLUMKAEW 1500 ft	SAMUTSAKORN 3500 ft	KOH SRI CHANG 3500 ft
To the SOUTHEAST (2)	LUMLOOKKA 1000 ft	BANG NAM PREAW 1000 ft	BANG PAKONG 1500 ft
To the EAST	LUMLOOKKA 1000 ft	BANG NAM PREAW 1000 ft	

c) VFR entry procedures for VTBD

Direction Of flight	Reporting point/ Recommended maximum altitude	Reporting point/ Recommended maximum altitude	Reporting point/ Recommended maximum altitude	Reporting point/ Recommended maximum altitude	Reporting point/ Recommended maximum altitude
From the NORTH	AYUTTHAYA 2000 ft	PATUMTHANI 1000 ft	5 NM WEST 1000 ft	3 NM WEST 1000 ft	
From the NORTHEAST	HINKONG 4500 ft or above	AYUTTHAYA 2000 ft	PATUMTHANI 1000 ft	5 NM WEST 1000 ft	3 NM WEST 1000 ft
From the WEST	LADLUMKAEW 1000 ft	PATUMTHANI 1000 ft	5 NM WEST 1000 ft	3 NM WEST 1000 ft	
From the SOUTHWEST	SAMUTSAKORN 2000 ft	10 NM WEST 1500 ft	5 NM WEST 1000 ft	3 NM WEST 1000 ft	
From the SOUTHEAST (1)	KOH SRICHANG 4500 ft or above	SAMUTSAKORN 2000 ft	10 NM WEST 1500 ft	5 NM WEST 1000 ft	3 NM WEST 1000 ft
From the SOUTHEAST (2)	KOH LAN 4500 ft or above	SAMUTSAKORN 2000 ft	10 NM WEST 1500 ft	5 NM WEST 1000 ft	3 NM WEST 1000 ft
From the SOUTHEAST (3)	BANGPAKONG 1500 ft	BANGNAMPREAW 1000 ft	LUMLOOKKA 1000 ft		
From the EAST	BANGNAMPREAW 1000 ft	LUMLOOKKA 1000 ft			

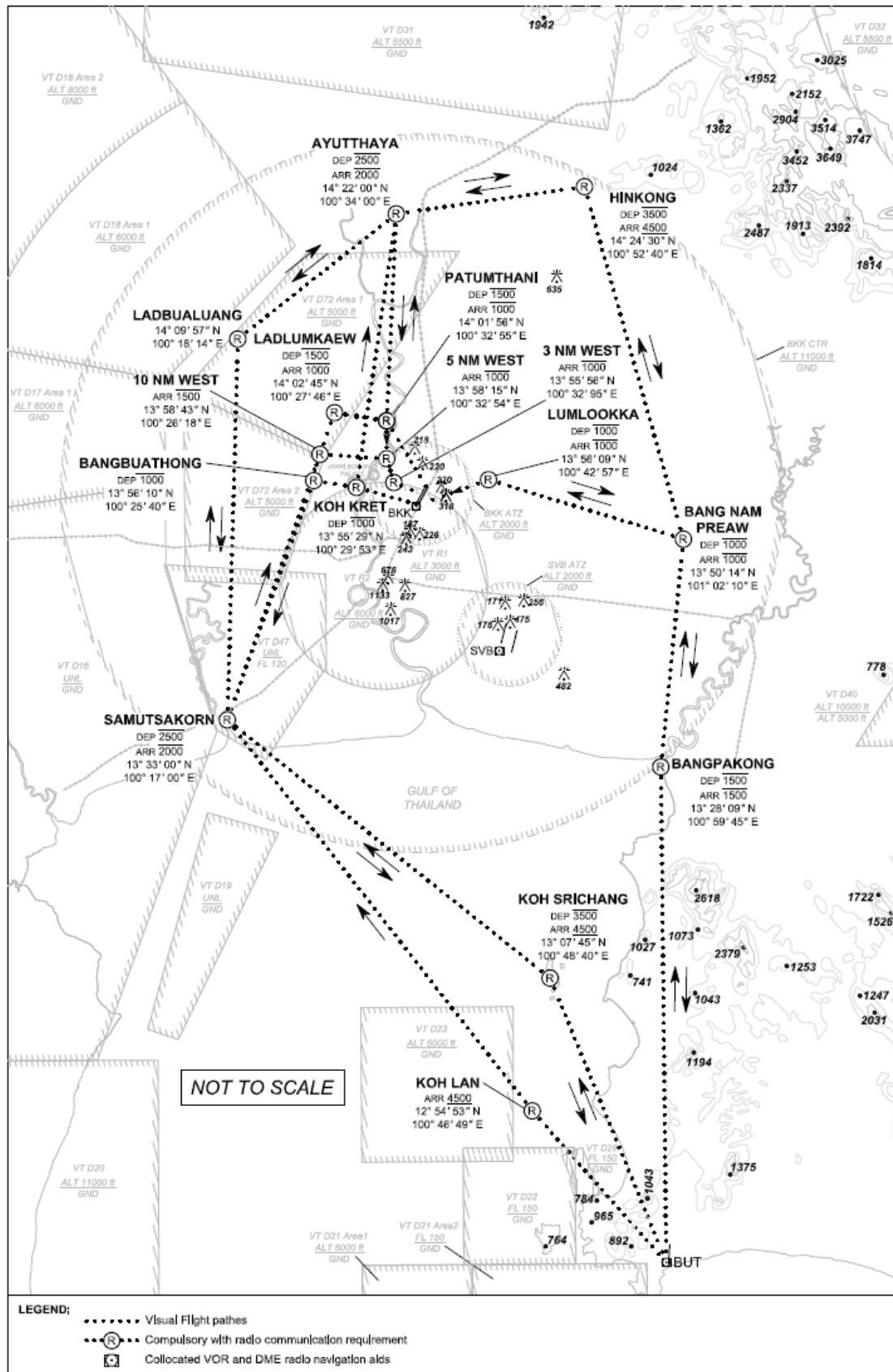
Note: ⁽¹⁾ When VTD 22 inactive, U-TAPAO Approach will assign the arrival aircraft to report over Koh Lan reporting point.

VFR ENTRY AND EXIT
PROCEDURE
FOR LIGHT AIRCRAFT
CHART

AERODROME ELEV. 9 FT

APP : 122.35, 257.6
124.35, 262.5
125.2, 259.6
119.4, 254.6
121.7
TWR : 118.1, 236.6
GND : 121.9, 257.8
ATIS : 126.4, 344.6

Bangkok/Control Zone
VTBD/Don Mueang Intl
RWY 03L/21R and 03R/21L



LEGEND:
 Visual flight paths
(R)..... Compulsory with radio communication requirement
 [VOR/DME symbol] Collocated VOR and DME radio navigation aids

1.2.6 VFR entry and exit procedure for light aircraft operating at Suvarnabhumi International Airport (VTBS) (See ENR 2.2-7)

a) VFR exit procedures for VTBS RWY 19L and 19R

Direction Of flight	Reporting point/ Recommended maximum altitude	Reporting point/ Recommended maximum altitude	Reporting point/ Recommended maximum altitude
To the SOUTH	5 NM EAST 1500 ft	KLONGDAN 1500 ft	HOTEL Altitude will be advised by ATC
To the NORTH	5 NM EAST 1500 ft	BANG NAM PREAW 1500 ft	HIN KONG Altitude will be advised by ATC

b) VFR exit procedures for VTBS RWY 01L and 01R

Direction Of flight	Reporting point/ Recommended maximum altitude	Reporting point/ Recommended maximum altitude	Reporting point/ Recommended maximum altitude
To the SOUTH	SUANLUANG 1000 ft	PAK NAM 1500 ft	HOTEL Altitude will be advised by ATC
To the NORTH	BANGNAMPREAW 1500 ft	HIN KONG Altitude will be advised by ATC	

c) VFR entry procedures for VTBS

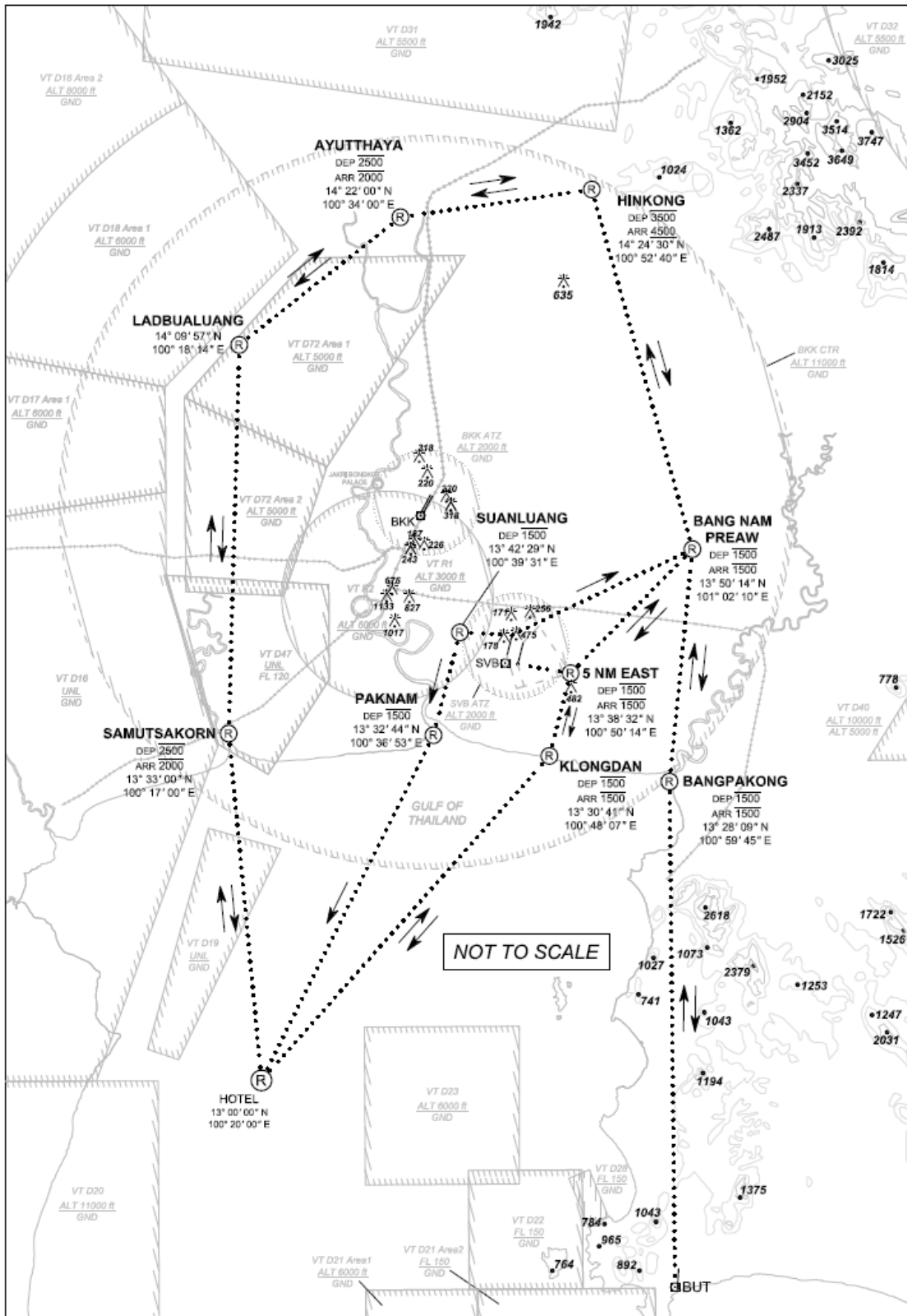
Direction Of flight	Reporting point/ Recommended maximum altitude	Reporting point/ Recommended maximum altitude	Reporting point/ Recommended maximum altitude
From the SOUTH	HOTEL Altitude will be advised by ATC	KLONGDAN 1500 ft	5 NM EAST 1500 ft
From the NORTH	HIN KONG Altitude will be advised by ATC	BANGNAMPREAW 1500 ft	5 NM EAST 1500 ft

VFR ENTRY AND EXIT
PROCEDURE
FOR LIGHT AIRCRAFT
CHART

AERODROME ELEV. 5 FT

APP :	122.35, 257.6
	124.35, 262.5
	125.2, 259.6
	128.95
TWR :	118.2, 274.5
	119.0
ATIS :	127.8, 278.6

Bangkok/Control Zone
VTBS/Suvarnabhumi Intl
RWY 01L/19R and 01R/19L



LEGEND:
 Visual Flight paths
(R)..... Compulsory with radio communication requirement
 (R) Collocated VOR and DME radio navigation aids

1.3 VFR ENTRY AND EXIT PROCEDURES FOR HELICOPTERS

- 1.3.1 Two – way radio communication shall be established as soon as possible or not later than reaching altitude 500 feet above ground level.
- 1.3.2 Arriving helicopters intending to land at Don Mueang Airport or other helipads within Don Mueang ATZ shall be advised to contact Don Mueang Tower on frequency 118.1 MHz for landing instruction. The completion of landing shall be informed to the appropriate ATS unit as soon as practicable.
- 1.3.3 Those taking off from heliports or helipads outside Don Mueang ATZ shall contact Bangkok Approach on frequency 125.8 MHz. If the communication could not be done through radio frequencies as specified, the operator may use other available means such as telephone for departure instruction and necessary information prior to taking off.
- 1.3.4 Table of VFR reporting points for helicopter within Bangkok Control Zone

No.	Reporting point	Landmark	Radial/DME from BKK VOR	Lat/Long
1.	BANGKHEN	11 TH Infantry	R178/ 2.19D	135124N1003550E
2.	AYUTTHAYA	Preedee Panomyong Bridge (Ayutthaya Downtown)	R356/28.32D	142200N1003400E
3.	BANGCARE	The mall department store Building	R240/16.9D	134509N1002035E
4.	BANG NAM PREAW	District Office of Bang Nam Prew	R097/26.4D	135014N1010210E
5.	BANGPAKONG	Bang Pa Kong Delta	R137/34.3D	132809N1005945E
6.	BANGPU	Sukta Bridge	R170/23.1D	133044N1003944E
7.	BANGYAI	Kanchanapisek Rd. crossing Rattanathibet Rd.	R266/10.56D	135256N1002456E
8.	CAVPAD	Cavalry Helipad (Sanampao)	R201/7.55D	134617N1003322E
9.	CRIMINAL COURT	Criminal Court	R193/4.57D	134908N1003441E
10.	MINBURI	Kanchanapisek Rd. Intersection crossing Ramintra Rd.	R130/ 6.3D	134930N1004042E
11.	HINKONG	Racetrack Ring Toll Way, Saraburi	R028/34.86D	142430N1005240E
12.	KLONGCHAN	Hua Mark Stadium	R167/ 8.09D	134541N1003735E
13.	KLONGLUANG	Ministry of Agriculture Helipad	R005/ 13.61D	140713N1003705E
14.	LUMLOOKKA	the Outer Ring East Toll Way crossing Lumlooka Rd.	R070/7.42D	135609N1004257E
15.	ONGKARAK	District Office of Ongkarak	R060/ 27.11D	140702N1010001E
16.	PATUMTHANI	Patumthani Bridge (Crossing Chaopraya River)	R341/8.74D	140156N1003255E
17.	PRATUNAMBHAINN	The Outer Ring East Toll way Pratunambhainn	R008/18.60D	141205N1003833E
18.	JAKRIBONGKOT PALACE	-	R306/5D	135605N1003138E
19.	RAMA 7 BRIDGE	Rama 7 Bridge	R224/ 6.07D	134915N1003124E
20.	RAMA 9 BRIDGE	Rama 9 Bridge	R193/12.91D	134054N1003056E
21.	SAMUTSAKORN	Mae Klong Delta	R221/27.48D	133300N1001700E
22.	TANYABURI	District Office of Tanyaburi	R042/ 10.93D	140143N1004321E
23.	TPAD	Thai Police Aviation Division	R131/ 2.98D	135135N1003815E
24.	WANGNOI	District Office of Wangnoi	R020/20.0D	141226N1004256E
25.	KANCHANAPHISEK BRIDGE	Kanchanaphisek Bridge	R193/12.8D	134051N1003253E

1.3.5 VFR entry and exit procedure for helicopters operating at Don Mueang International Airport (VTBD)
(see ENR 2.2-12 and ENR 2.2-13)

Direction Of flight	Reporting point	Reporting point	Reporting point	Reporting point
DON MUEANG – AYUTTAYA	LUMLOOKKA	TANYABURI	PRATUNAMBHAINN	AYUTTAYA
DON MUEANG – WANGNOI	LUMLOOKKA	TANYABURI	WANGNOI	
DON MUEANG – HINKONG	LUMLOOKKA	TANYABURI	HINKONG	
DON MUEANG – ONGKARAK	LUMLOOKKA	ONGKARAK		
DON MUEANG – BANGNAMPREAW	LUMLOOKKA	BANGNAMPREAW		
DON MUEANG – BANGPAKONG (1)	CRIMINAL COURT	BANGPU	BANGPAKONG	
DON MUEANG – BANGPAKONG (2) *When VTBD RWY 03L and 03R in use	LUMLOOKKA	BANGNAMPREAW	BANGPAKONG	
DON MUEANG – SAMUTSAKORN (1)	CRIMINAL COURT	RAMA 9 th BRIDGE	SAMUTSAKORN	
DON MUEANG – SAMUTSAKORN (2) *When VTBD RWY 03L and 03R in use	LUMLOOKKA	MINBURI	KLONGCHAN	RAMA 9 th BRIDGE
	SAMUTSAKORN			
DON MUEANG – BANGYAI (1)	CRIMINAL COURT	RAMA 7 th BRIDGE	BANGYAI	
DON MUEANG – BANGYAI (2) *When VTBD RWY 03L and 03R in use	LUMLOOKKA	MINBURI	KLONGCHAN	RAMA 9 th BRIDGE
	BANGCARE	BANGYAI		
DON MUEANG – SOUTHBOUND AND WESTBOUND	3NM West	RAMA 7 th BRIDGE		
DON MUEANG – NORTHBOUND	3NM West	PATUMTHANI		

1.3.6 VFR entry and exit procedure for helicopters operating at at TPAD (Thai Police Aviation Division)
(see ENR 2.2-12 and ENR 2.2-13)

Direction Of flight	Reporting point	Reporting point	Reporting point	Reporting point
TPAD – AYUTTAYA	LUMLOOKKA	TANYABURI	PRATUNAMBHAINN	AYUTTAYA
TPAD – WANGNOI	LUMLOOKKA	TANYABURI	WANGNOI	
TPAD – HINKONG	LUMLOOKKA	TANYABURI	HINKONG	
TPAD – ONGKARAK	LUMLOOKKA	ONGKARAK		
TPAD – BANGNAMPREAW	LUMLOOKKA	BANGNAMPREAW		
TPAD – BANGPAKONG (1)	CRIMINAL COURT	BANGPU	BANGPAKONG	
TPAD – BANGPAKONG (2) *When VTBD RWY 03L and 03R in use	LUMLOOKKA	BANGNAMPREAW	BANGPAKONG	
TPAD – SAMUTSAKORN	CRIMINAL COURT	RAMA 9 th BRIDGE	SAMUTSAKORN	
TPAD – BANGYAI	CRIMINAL COURT	RAMA 7 th BRIDGE	BANGYAI	

1.3.7 VFR entry and exit procedure for helicopters operating at 11th Infantry (Bangkhen)
(see ENR 2.2-12 and ENR 2.2-13)

Direction Of flight	Reporting point	Reporting point	Reporting point	Reporting point	Reporting point
BANGKHEN – AYUTTAYA	MINBURI	LUMLOOKKA	TANYABURI	PRATUNAM BHAINN	AYUTTAYA
BANGKHEN – WANGNOI	MINBURI	LUMLOOKKA	TANYABURI	WANGNOI	
BANGKHEN – HINKONG	MINBURI	LUMLOOKKA	TANYABURI	HINKONG	
BANGKHEN – ONGKARAK	MINBURI	LUMLOOKKA	ONGKARAK		
BANGKHEN – BANGNAMPREAW	MINBURI	LUMLOOKKA	BANGNAM PREAW		
BANGKHEN – BANGPAKONG (1)	CRIMINAL COURT	BANGPU	BANGPAKONG		
BANGKHEN – BANGPAKONG (2) *When VTBD RWY 03L and 03R in use	MINBURI	LUMLOOKKA	BANGNAM PREAW	BANGPAKONG	
BANGKHEN – SAMUTSAKORN (1)	CRIMINAL COURT	RAMA 9 th BRIDGE	SAMUTSAKORN		
BANGKHEN – SAMUTSAKORN (2) *When VTBD RWY 03L and 03R in use	MINBURI	KLONGCHAN	RAMA 9 th BRIDGE	SAMUTSAKORN	
BANGKHEN – BANGYAI (1)	CRIMINAL COURT	RAMA 7 th BRIDGE	BANGYAI		
BANGKHEN – BANGYAI (2) *When VTBD RWY 03L and 03R in use	CRIMINAL COURT	KLONGCHAN	RAMA 9 th BRIDGE	BANGCARE	BANGYAI

1.3.8 VFR entry and exit procedure for helicopters operating at CAVPAD and helipads in Bangkok city (Bangkok) (see ENR 2.2-12 and ENR 2.2-13)

Direction Of flight	Reporting point	Reporting point	Reporting point	Reporting point	Reporting point
BANGKOK – AYUTTAYA	KLONGCHAN	MINBURI	LUMLOOKKA	TANYABURI	PRATUNAM BHAINN
	AYUTTAYA				
BANGKOK – WANGNOI	KLONGCHAN	MINBURI	LUMLOOKKA	TANYABURI	WANGNOI
BANGKOK – DON MUEANG (1)	CRIMINAL COURT	DON MUEANG			
BANGKOK – DON MUEANG (2) *When VTBD RWY 03L and 03R in use	KLONGCHAN	MINBURI	LUMLOOKKA		
BANGKOK – HINKONG	KLONGCHAN	MINBURI	LUMLOOKKA	TANYABURI	HINKONG
BANGKOK – ONGKARAK	KLONGCHAN	MINBURI	LUMLOOKKA	ONGKARAK	
BANGKOK – BANGNAMPREAW	KLONGCHAN	MINBURI	LUMLOOKKA	BANGNAM PREAW	
BANGKOK – BANGPAKONG (1)	CRIMINAL COURT	BANGPU	BANGPAKONG		
BANGKOK – BANGPAKONG (2) *When VTBD RWY 03L and 03R in use	RAMA 9 th BRIDGE	BANGPU	BANGPAKONG		
BANGKOK – SAMUTSAKORN	RAMA 9 th BRIDGE	SAMUTSAKORN			
BANGKOK – BANGYAI (1)	RAMA 7 th BRIDGE	BANGYAI			
BANGKOK – BANGYAI (2) *When VTBD RWY 03L and 03R in use	RAMA 9 th BRIDGE	BANGCARE	BANGYAI		

1.3.9 VFR entry and exit procedure for helicopters operating at Klongluang (see ENR 2.2-12 and ENR 2.2-13)

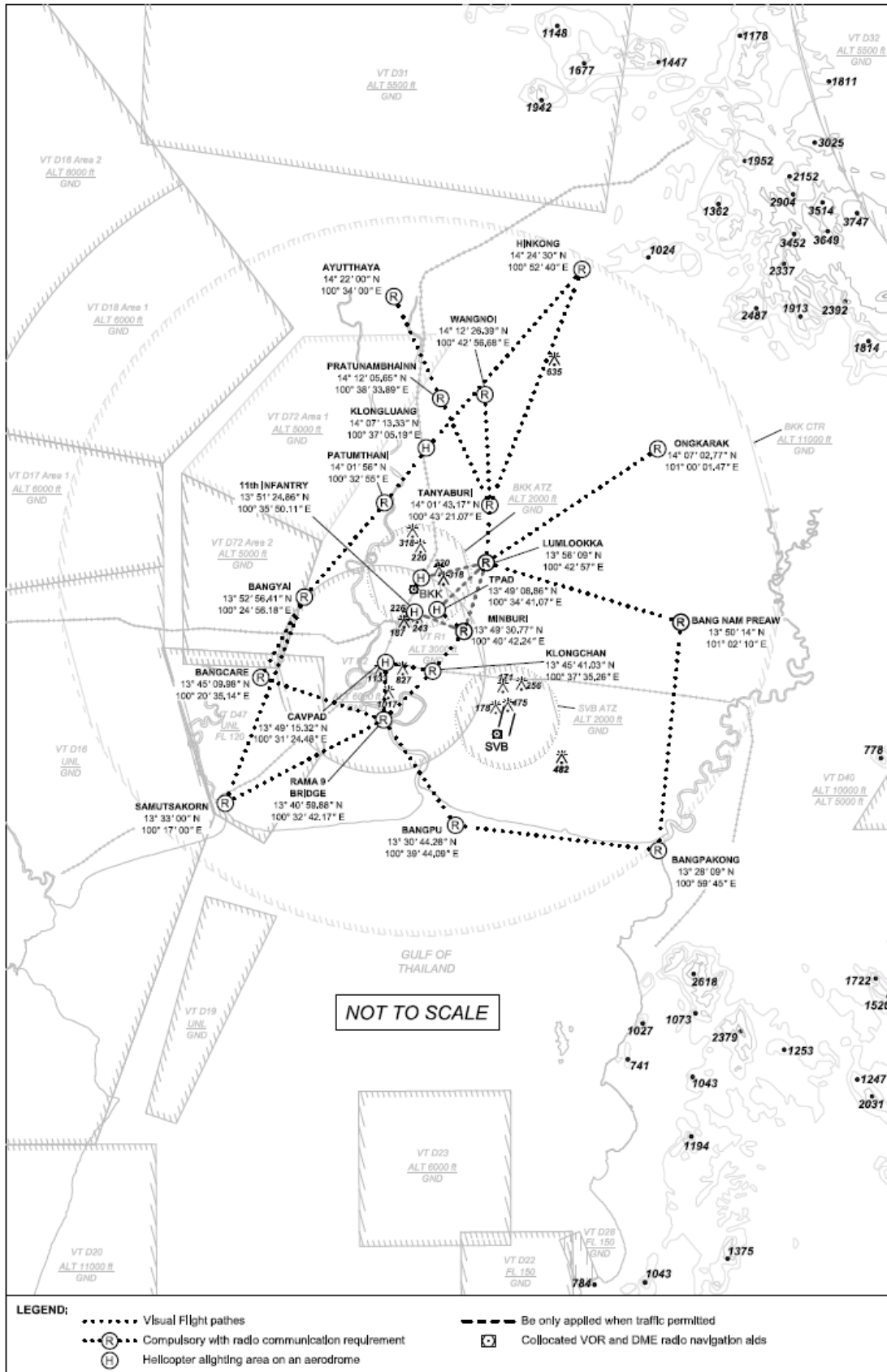
Direction Of flight	Reporting point	Reporting point	Reporting point	Reporting point
KLONGLUANG – AYUTTAYA	AYUTTAYA			
KLINGLUANG – HINKONG	HINKONG			
KLINGLUANG – ONGKARAK	ONGKARAK			
KLINGLUANG – BANGNAMPREAW	TANYABURI	BANGNAMPREAW		
KLINGLUANG – BANGPAKONG	TANYABURI	BANGNAMPREAW	BANGPAKONG	
KLINGLUANG – DON MUEANG	TANYABURI	LUMLOOKKA	DON MUEANG	
KLINGLUANG - BANGKOK	TANYABURI	LUMLOOKKA	MINBURI	KLONGCHAN
KLINGLUANG - PATUMTHANI	PATUMTHANI			
BANGKOK – SAMUTSAKORN	PATUMTHANI	BANGYAI	SAMUTSAKORN	

VFR ENTRY AND EXIT
PROCEDURE
FOR HELICOPTER
CHART

AERODROME ELEV. 9 FT

APP :	122,35, 257,6
	124,35, 262,5
	125,2, 259,6
	119,4, 254,6
	121,7
	125,8
TWR :	118,1, 236,6
GND :	121,9, 257,8
ATIS :	126,4, 344,6

Bangkok/Control Zone
VTBD/Don Mueang Intl
RWY 03L and 03R

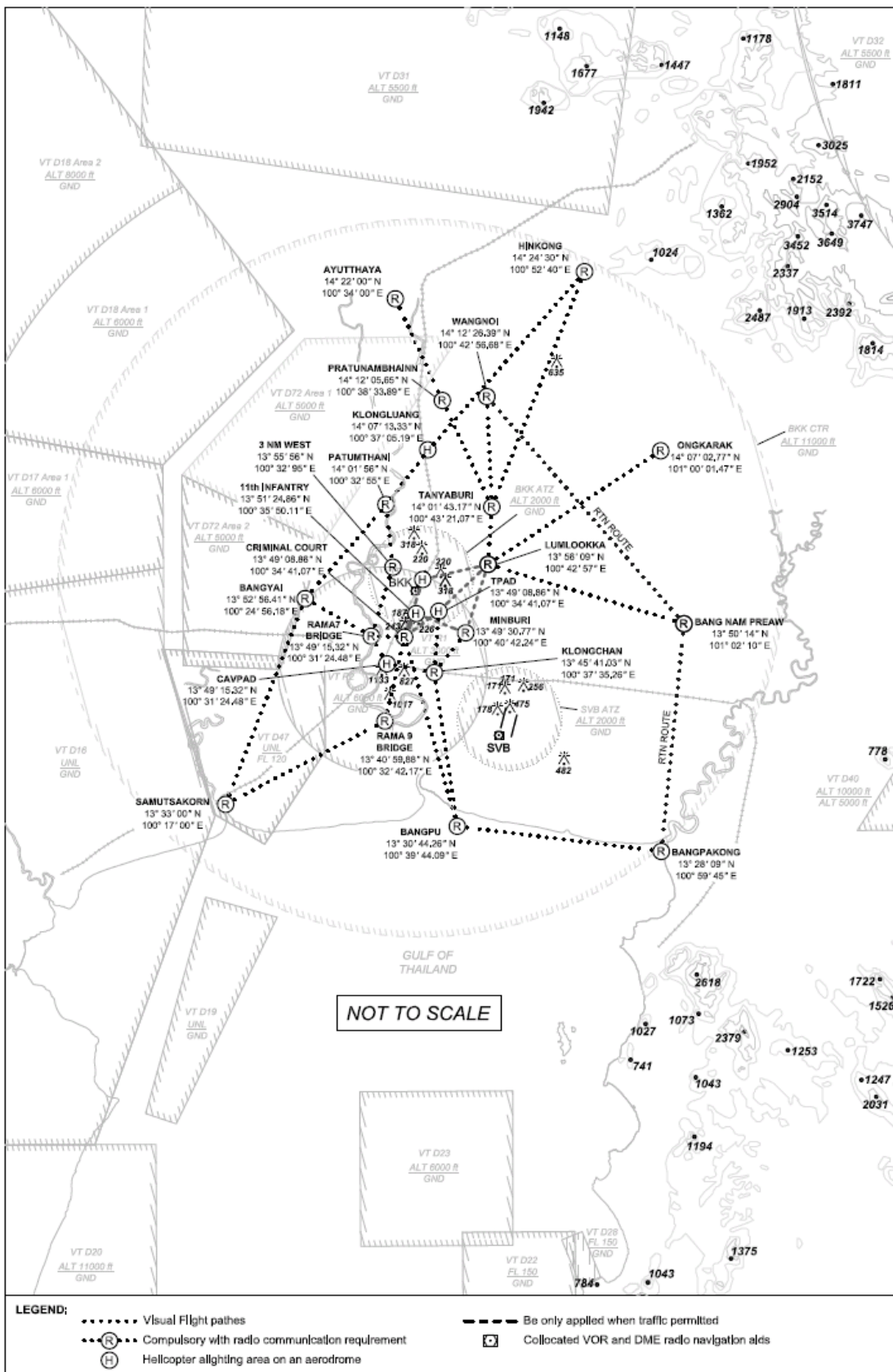


VFR ENTRY AND EXIT
PROCEDURE
FOR HELICOPTER
CHART

AERODROME ELEV. 9 FT

APP : 122,35, 257,6
124,35, 262,5
125,2, 259,6
119,4, 254,6
121,7
125,8
TWR : 118,1, 236,6
GND : 121,9, 257,8
ATIS : 126,4, 344,6

Bangkok/Control Zone
VTBD/Don Mueang Intl
RWY 21L and 21R



LEGEND:
 - - - - - Visual Flight paths
 - (R) - Compulsory with radio communication requirement
 - (H) - Helicopter alighting area on an aerodrome
 - - - - - Be only applied when traffic permitted
 - [] - Collocated VOR and DME radio navigation aids

THIS PAGE INTENTIONALLY LEFT BLANK