

Phone: 286 - 0922  
Fax: 287 - 4060  
Telex: 72099 DEPAVIA TH  
Telegraphic Address:  
AFTN: VTBAYOYX  
COMM. CIVIL AIR BANGKOK

**DEPARTMENT OF AVIATION**  
**Aeronautical Information Service**  
**Tung Mahamek, Bangkok 10120**  
**Thailand**

**AIRAC**  
**AIP SUPPLEMENT**

**A14/01**  
**18 October 2001**

**REVISION OF RNAV DEPARTURE TRANSITION**  
**AT BANGKOK INTERNATIONAL AIRPORT**

With effect from 29 November 2001. RNAV departure transition have been revised at Bangkok International Airport to facilitate the maintenance of a safe and efficient flow of air traffic. See the attachment for details.

This AIRAC AIP Supplement cancels AIP Supplement A4/99 page dated 1 Jul 99 and NOTAM A1444/99, C2634/99, A1436/99 and C2618/99.

This AIRAC AIP Supplement will remain in force until its contents have been incorporated in AIP Thailand.

---

**RNAV DEPARTURE -  
TRANSITION**

**TRANSITION LEVEL FL130  
TRANSITION ALTITUDE 11 000 ft**

APP 121.7 119.1  
ATIS 126.4  
GND 121.9 122.5  
TWR 118.1

**BANGKOK/International**

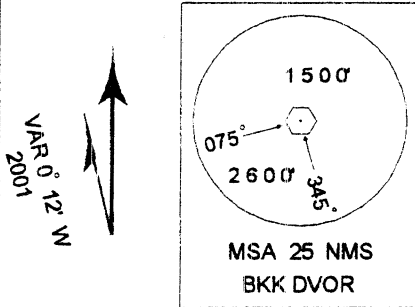
**RWY 21L/21R**

**BRUCE 2**

**General Information**

1. RTF frequency when instructed after departure 121.7, call sign Bangkok Approach.
2. En-route cruising level will be issued by "Bangkok Control" do not climb above SID altitude until cleared.
3. Maximum IAS 250 KT below 10 000 ft. unless otherwise authorized.

BEARINGS, TRACKS AND RADIALS ARE MAGNETIC  
ALTITUDES AND ELEVATIONS ARE IN FEET  
DISTANCES IN NAUTICAL MILES

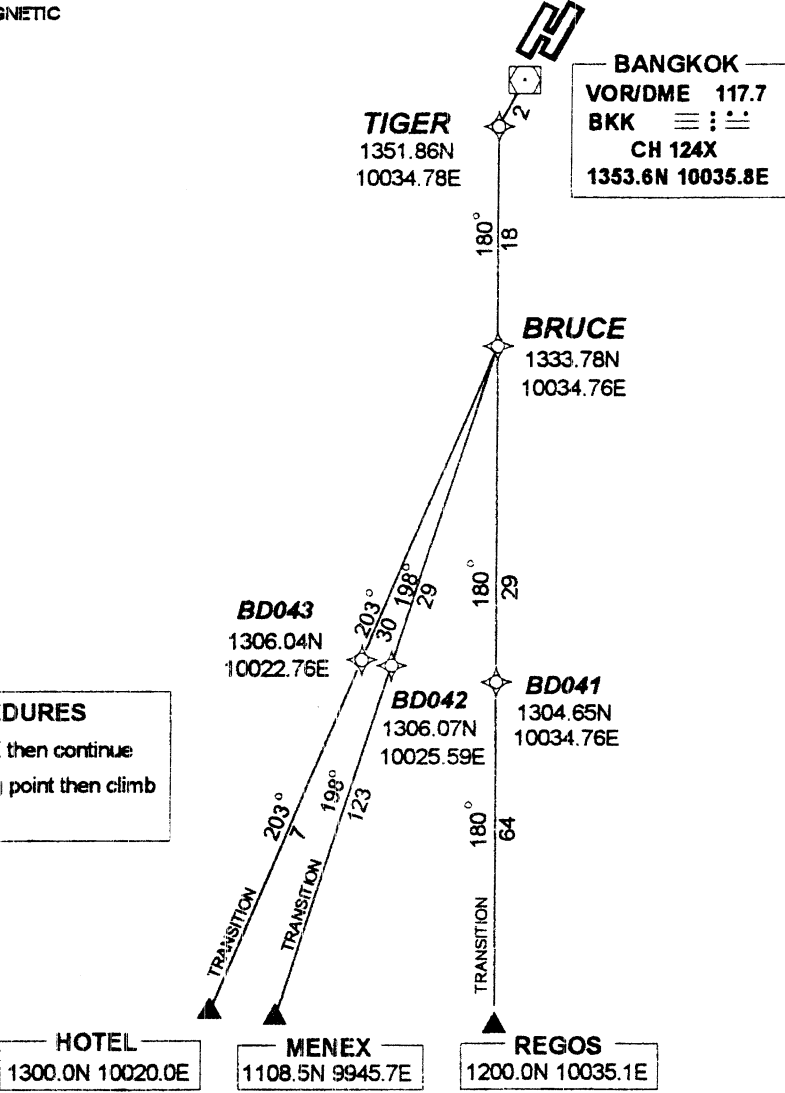


Non - RNAV equipped aircraft  
will be given radar vectors on request.

**LOST COMMUNICATION PROCEDURES**  
Comply with last assigned level to BRUCE then continue  
on BRUCE 2 departure until next reporting point then climb  
to flight plan cruising level.

**WARNING**  
Due to interaction with other routes do  
not climb above specified intermediate  
altitudes unless cleared by ATC

NOT TO SCALE



Take-off		Climb Instruction	
Straight ahead toward TIGER, then left track 180° to BRUCE		Climb to FL160	
Transition	Routing	Altitudes	Airways
REGOS	Track 180°/93 nm	Cross BD 041 at or below FL160	A464, M751, W19
MENEX	Track 198°/152 nm	Cross BD 042 at or below FL160	G458
HOTEL	Track 203°/37 nm	Cross BD 043 at or below FL160	W31

**RNAV DEPARTURE -  
TRANSITION**

**TRANSITION LEVEL FL130  
TRANSITION ALTITUDE 11 000 ft**

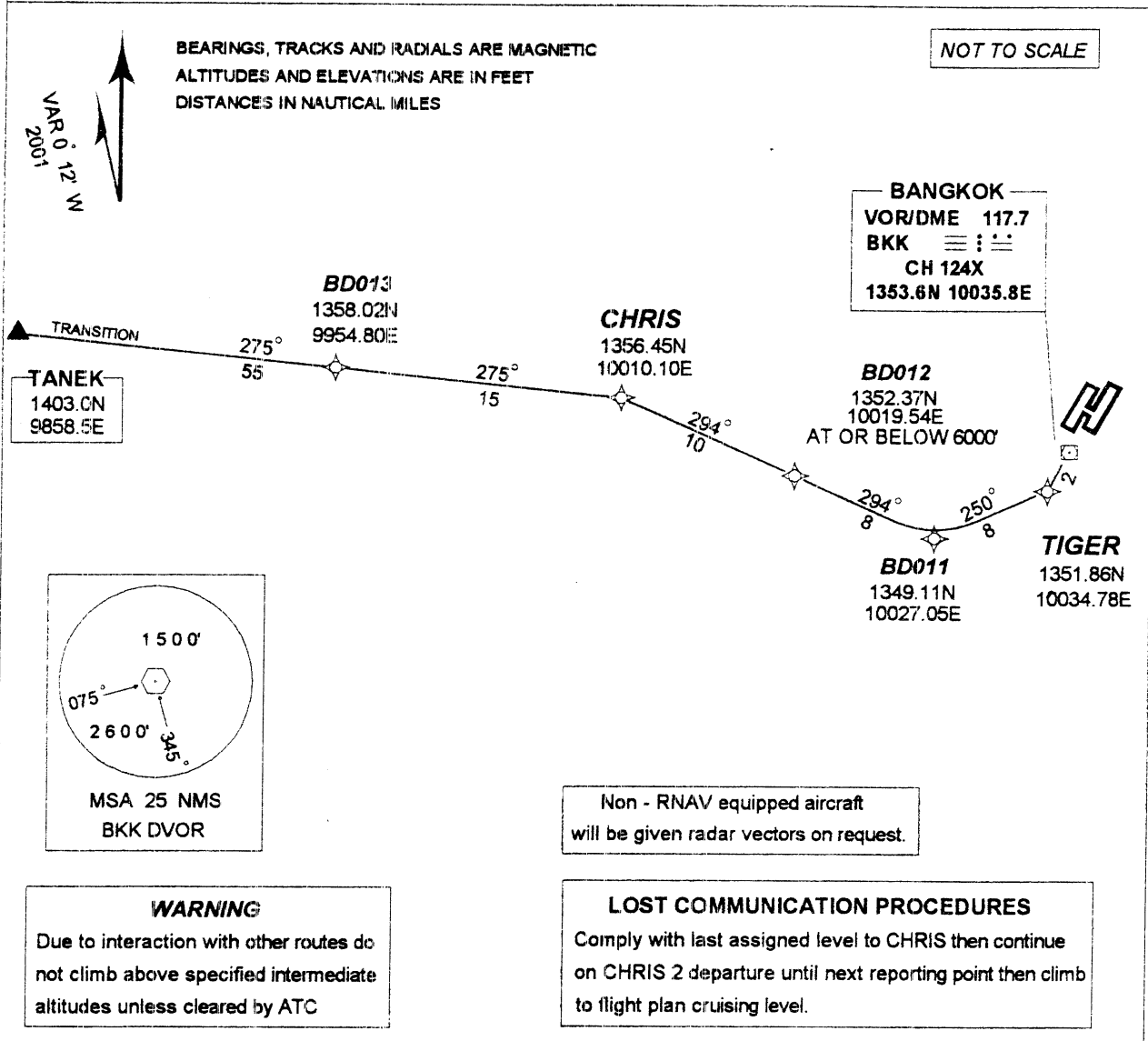
APP 121.7 119.1  
ATIS 126.4  
GND 121.9 122.5  
TWR 118.1

**BANGKOK/International  
RWY 21L/21R**

**CHRIS 2**

**General Information**

1. RTF frequency when instructed after departure 121.7, call sign Bangkok Approach.
2. En-route cruising level will be issued by "Bangkok Control" do not climb above SID altitude until cleared.
3. Maximum IAS 250 KT below 10 000 ft. unless otherwise authorized.



**WARNING**  
Due to interaction with other routes do not climb above specified intermediate altitudes unless cleared by ATC

Non - RNAV equipped aircraft will be given radar vectors on request.

**LOST COMMUNICATION PROCEDURES**  
Comply with last assigned level to CHRIS then continue on CHRIS 2 departure until next reporting point then climb to flight plan cruising level.

Take-off		Climb Instruction	
Straight ahead toward TIGER, then turn right track 250° to BD 011, then turn right track 294° to CHRIS via BD 012		Climb to FL160 cross BD 012 at or below 6000 ft	
Transition	Routing	Altitudes	Airways
TANEK	Track 275°/70 nm	Cross CHRIS at or above 7000 ft cross BD 013 BTN 9000 ft - FL160	A349, R468

**RNAV DEPARTURE -  
TRANSITION**

**TRANSITION LEVEL FL130  
TRANSITION ALTITUDE 11 000 ft**

APP 121.7 119.1  
ATIS 126.4  
GND 121.9 122.5  
TWR 118.1

**BANGKOK/International**

**RWY 21L/21R**

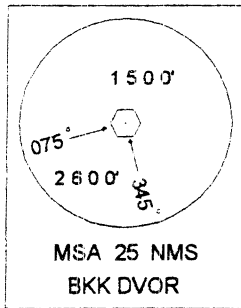
**FRANK 2**

**General Information**

1. RTF frequency when instructed after departure 121.7, call sign Bangkok Approach.
2. En-route cruising level will be issued by "Bangkok Control" do not climb above SID altitude until cleared.
3. Maximum IAS 250 KT below 10 000 ft. unless otherwise authorized.

BEARINGS, TRACKS AND RADIALS ARE MAGNETIC  
ALTITUDES AND ELEVATIONS ARE IN FEET  
DISTANCES IN NAUTICAL MILES

VAR 0° 12' W  
2001

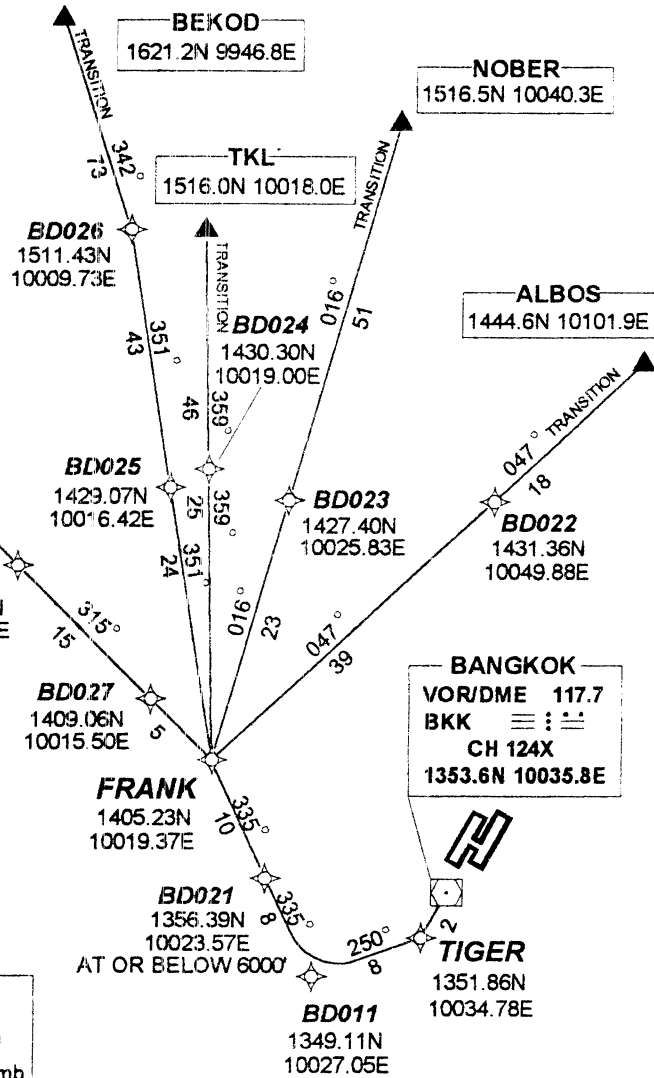


NOT TO SCALE

Non - RNAV equipped aircraft  
will be given radar vectors on request.

**WARNING**  
Due to interaction with other routes do  
not climb above specified intermediate  
altitudes unless cleared by ATC

**LOST COMMUNICATION PROCEDURES**  
Comply with last assigned level to FRANK then continue  
on FRANK 2 departure until next reporting point then climb  
to flight plan cruising level.



Take-off		Climb Instruction	
Straight ahead toward TIGER, then turn right track 250° to BD 111, then turn right track 335° to FRANK via BD 021		Climb to FL160 cross BD 021 at or below 6000 ft cross FRANK at or below 7000 ft	
Transition	Routing	Altitudes	Airways
LIMLA	Track 315°/141 nm	Cross BD 027 at or above 7000 ft and BD 028 BTN 9000 ft - FL160	A1
BEKOD	Track 351°/67 nm to BD 026 then Track 342°/73 nm	Cross BD 025 BTN 7000 ft - FL160	A464
TKL	Track 359°/71 nm	Cross BD 024 BTN 7000 ft - FL160	W9
NOBER	Track 016°/74 nm	Cross BD 023 BTN 7000 ft - FL160	B346, W21
ALBOS	Track 047°/57 nm	Cross BD 022 BTN 7000 ft - FL160	R474

**RNAV DEPARTURE - TRANSITION LEVEL FL130**  
**TRANSITION**      **TRANSITION ALTITUDE 11 000 ft**

APP 121.7 119.1  
 ATIS 126.4  
 GND 121.9 122.5  
 TWR 118.1

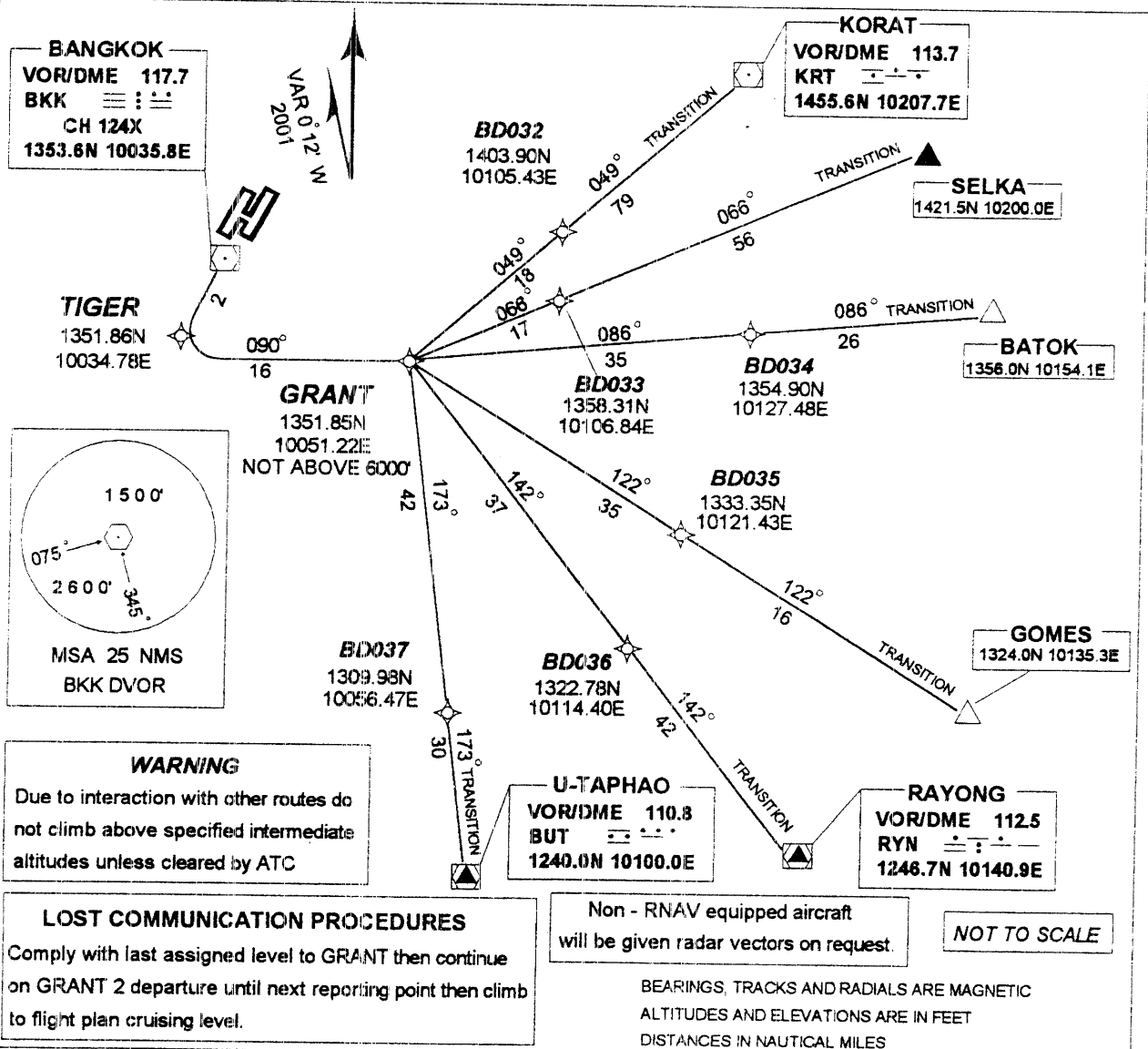
**BANGKOK/International**

**RWY 21L/21R**

**GRANT2**

**General Information**

1. RTF frequency when instructed after departure 119.1, call sign Bangkok Approach.
2. En-route cruising level will be issued by "Bangkok Control" do not climb above SID altitude until cleared.
3. Maximum IAS 250 KT below 10 000 ft. unless otherwise authorized.



Take-off		Climb Instruction	
Straight ahead toward TIGER, then turn left track 090° to GRANT,		Climb to FL160 cross GRANT at or below 6000 ft	
Transition	Routing	Altitudes	Airways
KORAT	Track 049°/97 nm	Cross BD 032 BTN 7000 ft - FL160	W1, A202
SELKA	Track 066°/73 nm	Cross BD 033 BTN 7000 ft - FL160	A1
BATOK	Track 086°/61 nm	Cross BD 034 at or below FL160	G474
GOMES	Track 122°/51 nm	Cross BD 035 at or below FL160	R468
RAYONG	Track 142°/79 nm	Cross BD 036 at or below FL160	N891
U-TAPHAO	Track 173°/72 nm	Cross BD 037 at or below FL160	R201

## WAY POINT LIST

IDENT	RADIAL	DME	.1		.01		REMARK
			Lat	Long	Lat	Long	
BD011	242	10	N1349.11	E10027.05	N134906.38	E1002702.94	
BD012	266	16	N1352.37	E10019.54	N135222.35	E1001932.16	
BD013	276	40	N1358.02	E09954.80	N135800.98	E0995447.88	
BD021	283	12	N1356.39	E10023.57	N135623.28	E1002334.34	
BD022	020	40	N1431.36	E10049.88	N143121.41	E1004952.54	
BD023	344	35	N1427.40	E10025.83	N142723.99	E1002549.75	
BD024	336	40	N1430.30	E10019.00	N143018.22	E1001900.04	
BD025	332	40	N1429.07	E10016.42	N142904.27	E1001624.94	
BD026	342	82	N1511.43	E10009.73	N151126.04	E1000943.81	
BD027	308	25	N1409.06	E10015.50	N140903.46	E1001529.74	
BD028	311	40	N1419.94	E10004.68	N141956.17	E1000440.57	
BD032	070	31	N1403.90	E10105.43	N140353.91	E1010525.93	
BD033	081	31	N1358.31	E10106.84	N135818.85	E1010650.57	
BD034	088	50	N1354.90	E10127.48	N135454.08	E1012728.91	
BD035	114	49	N1333.35	E10121.43	N133320.88	E1012125.99	
BD036	129	49	N1322.78	E10114.40	N132246.96	E1011424.10	
BD037	155	48	N1309.98	E10056.47	N130958.60	E1005628.12	
BD041	181	49	N1304.65	E10034.76	N130439.02	E1003446.51	
BD042	192	49	N1306.07	E10025.59	N130604.39	E1002535.54	
BD043	195	49	N1306.04	E10022.76	N130602.19	E1002245.83	
BRUCE	183	20	N1333.78	E10034.76	N133346.67	E1003446.51	
CHRIS	277	25	N1356.45	E10010.10	N135626.98	E1001008.39	
FRANK	306	20	N1405.23	E10019.37	N140514.03	E1001922.37	
GRANT	097	15	N1351.85	E10051.22	N135150.84	E1005113.35	
TIGER	209	2	N1351.86	E10034.78	N135151.39	E1003446.51	

**REMARK**

USE OF RWY 03L/03R :

- ATC PROCEDURES FOR TRAFFIC OPERATING TO/FROM BANGKOK INTL AIRPORT WILL BE PROVIDED WITH RADAR VECTERING ACCORDING TO THE PROVISIONS SPECIFIED BY ICAO DOC 4444 PART 8.
- DEPARTING AIRCRAFT WILL BE GIVEN A HEADING OR A SERIES OF HEADINGS TO INTERCEPT THE AIRWAYS OR ROUTES TO BE FLOWN FOR THE PURPOSE OF FACILITATING AN EFFICIENT DEPARTURE FLOW AND EXPEDITING CLIMB TO CRUISING LEVEL. THE INITIAL LEVEL WILL BE GIVEN BY APPROACH CONTROLLER.