

Phone: 66 02 286 0922  
Fax: 66 02 287 4060  
AFTN: VTBAYOYX  
E-mail: aisthai@aviation.go.th

**DEPARTMENT OF CIVIL AVIATION**  
**Aeronautical Information Service**  
**Tung Mahamek, Bangkok 10120**  
**Thailand**

**AIRAC**  
**AIP SUPPLEMENT**

**A11/10**  
**2 December 2010**

---

**REVISION OF IAC RNAV (GNSS) RWY 08 AND RWY 26**  
**IN HAT YAI INTL AIRPORT**

With effect from 13 January 2011, Instrument approach chart RNAV (GNSS) RWY08 and RNAV (GNSS) RWY26 at Hat Yai International airport will be revised as shown on the attached chart.

This AIRAC AIP Supplement cancels AIRAC AIP Supplement A14/09 dated 5 November 2009.

This AIRAC AIP Supplement will remain current until its contents have been incorporated in AIP Thailand.

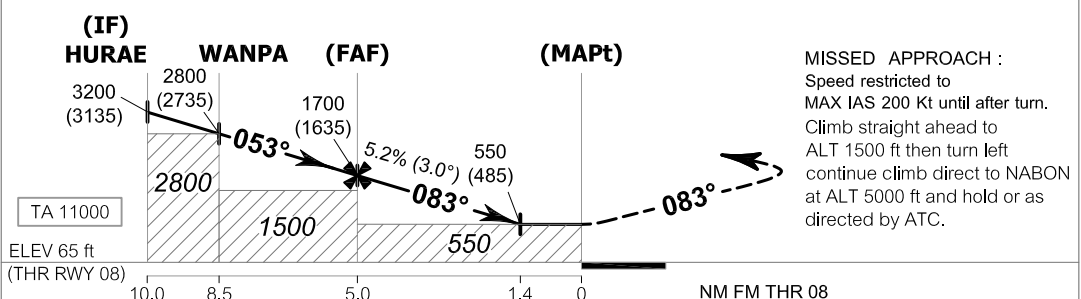
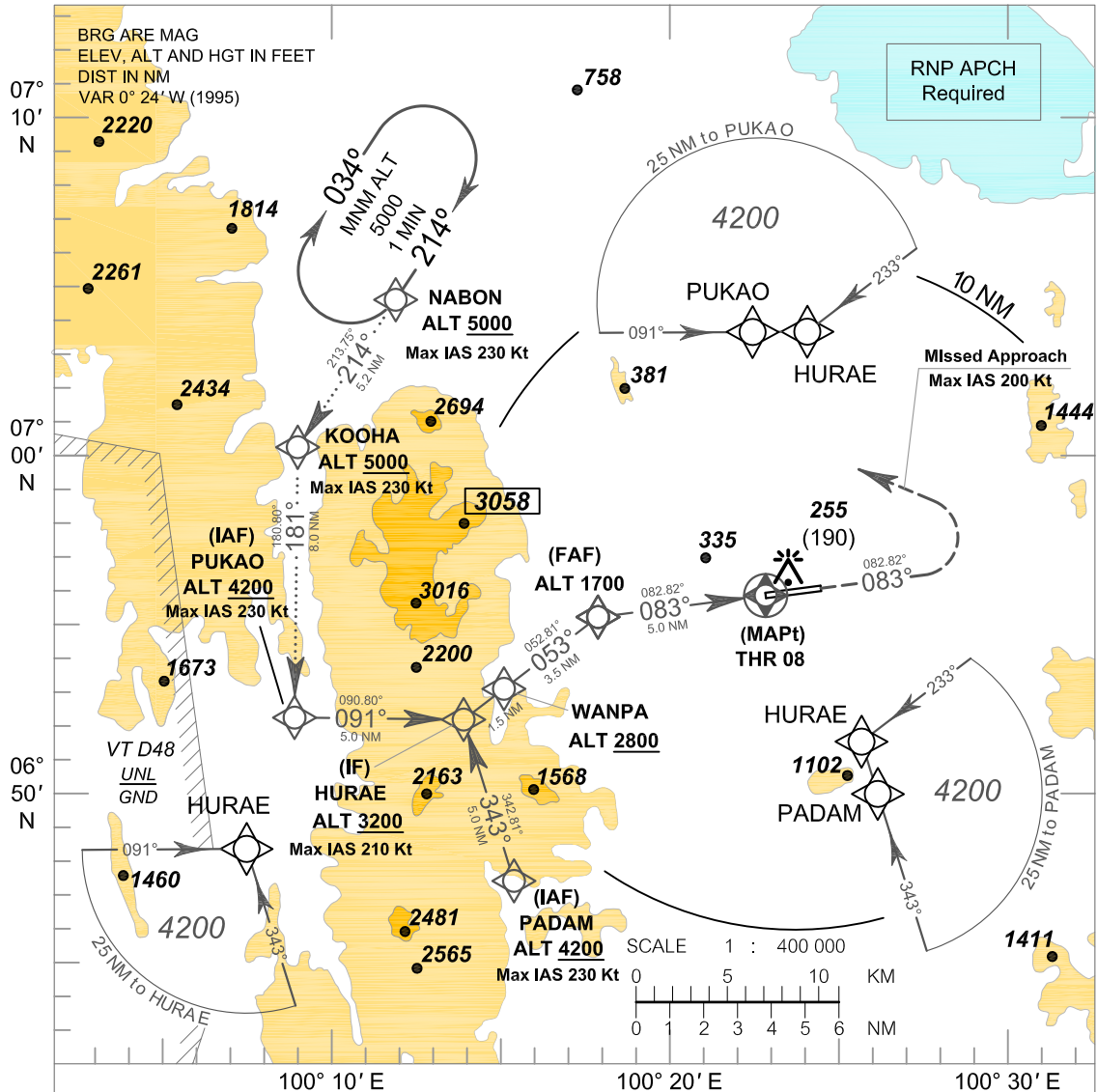
-----

**INSTRUMENT APPROACH CHART - ICAO** **AERODROME ELEV 90 FT**  
**HEIGHTS RELATED TO THR RWY 08 ELEV 65 FT**

APP : 126.7, 301.5  
 TWR : 118.1, 275.8  
 GND : 121.9, 257.8  
 ATIS : 128.8

**SONGKHLA / Hat Yai INTL (VTSS)**

**RNAV (GNSS) RWY 08**



**MISSED APPROACH :**  
 Speed restricted to MAX IAS 200 Kt until after turn. Climb straight ahead to ALT 1500 ft then turn left continue climb direct to NABON at ALT 5000 ft and hold or as directed by ATC.

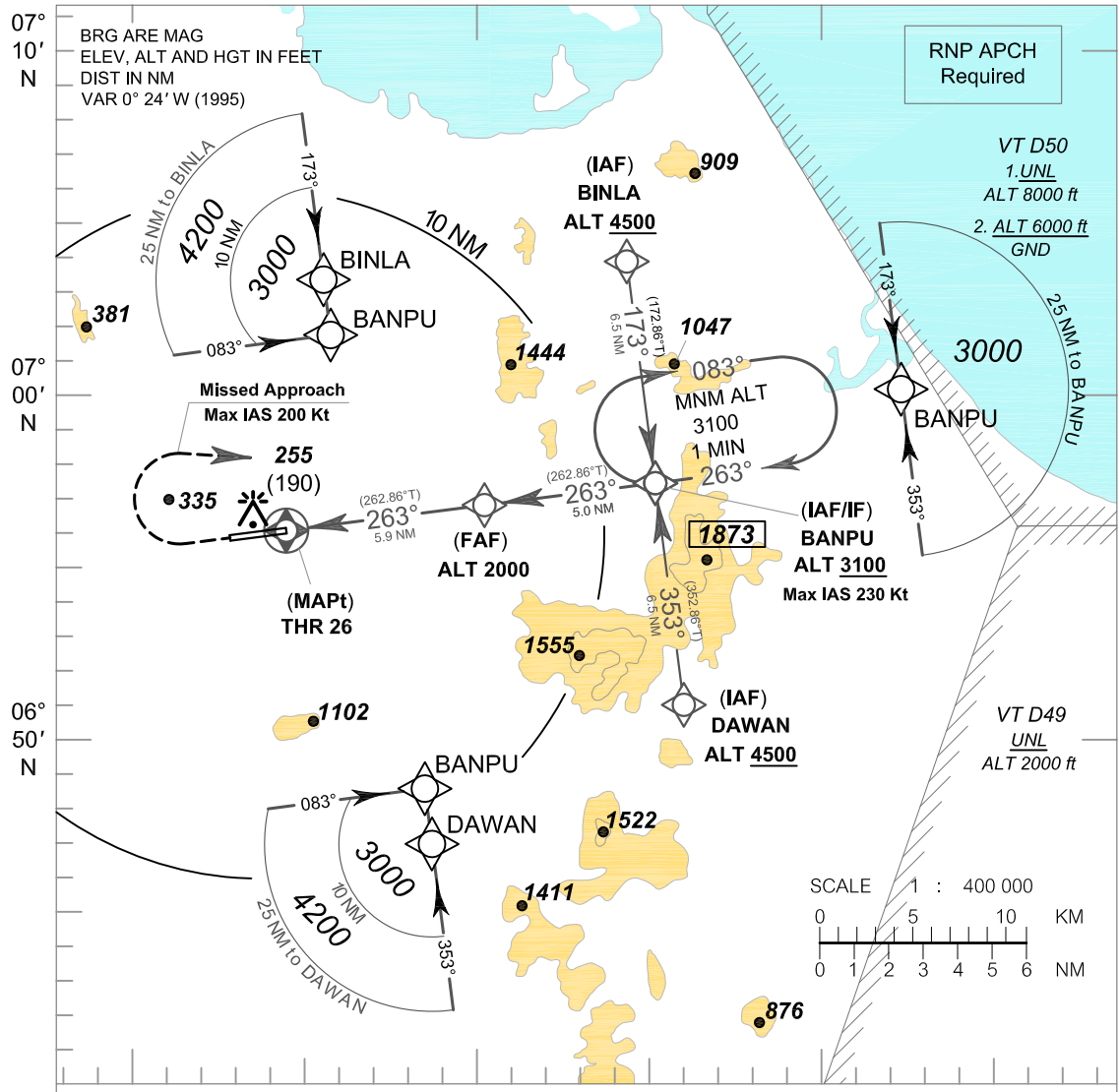
OCA/H	A	B	C	D	NM to THR 08	FAF	4 NM	3 NM	2 NM	1.4 NM
LNAV	550 (485)				Altitude (Height)	1700 (1635)	1390 (1325)	1070 (1005)	750 (685)	550 (485)
Circling (OCH AAL)	550 (460)	680 (590)	780 (690)		Ground speed (GS)	knot	100	120	140	160 180 200
REMARK: No direct to IF due to high terrain and proximity to Malaysian border.						Rate of descent	(ft/min)	530	635	740 850 955 1060

Fix identifier (Waypoint name)	WGS-84 Coordinate		Path terminator	Flyover	Course ° M (° T)	Turn direction	Altitude	Speed limit	Magnetic variation	Navigation Performance
	Latitude	Longitude								
NABON	07 04 40.87 N*	100 11 50.88 E*	IF	---	214°(213.75°)	---	+ 5000	230	0.4	RNP 1
KOOHA	07 00 18.30 N*	100 08 55.30 E*	TF	---	181°(180.80°)	L	+ 5000	230	0.4	RNP 1
PUKAO	06 52 15.95 N*	100 08 48.52 E*	IF/TF	---	091°(090.80°)	L	+ 4200	230	0.4	RNP 1
PADAM	06 47 23.68 N*	100 15 19.29 E*	IF	---	343°(342.81°)	---	+ 4200	230	0.4	RNP 1
HURAE	06 52 11.70 N*	100 13 50.16 E*	TF	---	053°(052.81°)	L,R	+ 3200	210	0.4	RNP 1
WANPA	06 53 06.52 N*	100 15 02.47 E*	TF	---	053°(052.81°)	---	+ 2800	---	0.4	RNP 1
FAF	06 55 13.91 N*	100 17 50.51 E*	TF	---	083°(082.82°)	R	1700	---	0.4	RNP 0.3
MAPt	06 55 51.55 N*	100 22 49.84 E*	---	Y	083°(082.82°)	---	550	200	0.4	RNP 0.3

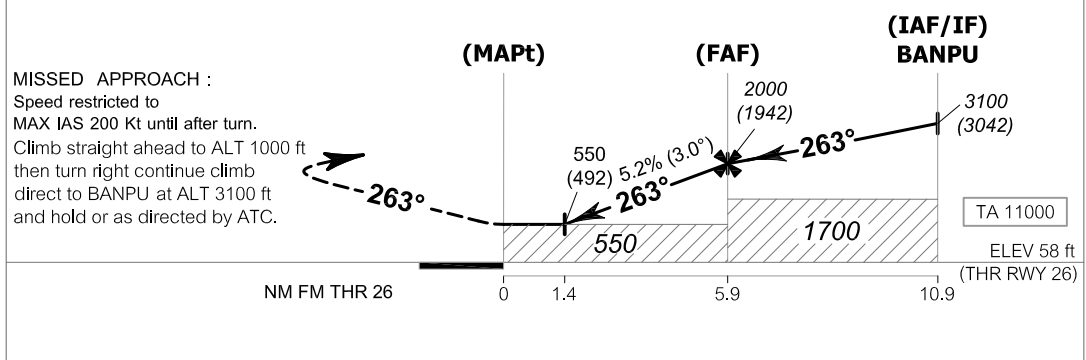
**INSTRUMENT APPROACH CHART - ICAO** **AERODROME ELEV 90 FT**  
**HEIGHTS RELATED TO THR RWY 26 ELEV 58 FT**

APP : 126.7 , 301.5  
 TWR : 118.1 , 275.8  
 GND : 121.9 , 257.8  
 ATIS : 128.8

**SONGKHLA / Hat Yai INTL (VTSS)**  
**RNAV (GNSS) RWY 26**



100° 20' E                      100° 30' E                      100° 40' E



**MISSED APPROACH :**  
 Speed restricted to  
**MAX IAS 200 Kt** until after turn.  
 Climb straight ahead to ALT 1000 ft  
 then turn right continue climb  
 direct to BANPU at ALT 3100 ft  
 and hold or as directed by ATC.

OCA/H	A	B	C	D	NM to THR 26	1.4 NM	2 NM	3 NM	4 NM	5 NM	FAF		
LNAV	550 (492)				Altitude (Height)	550 (492)	745 (687)	1065 (1007)	1380 (1322)	1700 (1642)	2000 (1942)		
Circling (OCH AAL)	550 (460)	680 (590)	780 (690)		Ground speed (GS)	knot	100	120	140	160	180	200	
						Rate of descent	(ft/min)	530	635	740	850	955	1060

**SONGKHLA / Hat Yai INTL (VTSS)**

**RNAV (GNSS) RWY 26**

Fix identifier (Waypoint name)	WGS-84 Coordinate		Path descriptor	Flyover	Course ° M (° T)	Turn direction	Altitude	Speed limit	Magnetic variation	Navigation Performance
	Latitude	Longitude								
BINLA	07 03 57.26 N*	100 34 31.75 E*	IF	---	173°(172.86°)	---	+ 4500	---	0.4	RNP 1
DAWAN	06 50 57.53 N*	100 36 09.52 E*	IF	---	353°(352.86°)	---	+ 4500	---	0.4	RNP 1
BANPU	06 57 25.74 N*	100 35 20.84 E*	IF/TF	---	263°(262.86°)	L,R	+ 3100	230	0.4	RNP 1
FAF	06 56 48.24 N*	100 30 21.51 E*	TF	---	263°(262.86°)	---	2000	---	0.4	RNP 0.3
MAPt	06 56 03.92 N*	100 24 28.30 E*	---	Y	263°(262.86°)	---	550	200	0.4	RNP 0.3