

Phone: 286-0922  
Fax: 287-4060  
Telex: 72099  
Telegraphic Address:  
AFTN: VTBAYOYN  
COMM. CIVIL AIR BANGKOK

**THAILAND**  
**AERONAUTICAL INFORMATION SERVICE**  
**DEPARTMENT OF AVIATION**  
**TUNG MAHAMEK, BANGKOK 10120**

**AIP**  
**SUPPLEMENT**

**B2/00**  
**28 February**

---

**REVISION OF VOR/DME INSTRUMENT APPROACH PROCEDURE AT SURAT AIRPORT**

Due to new VOR/DME has been installed at new location, so the instrument Approach Procedures will be revised.

This AIP Supplement cancels NOTAM C0578/00 and cancels AIP-Thailand pages VTSB AD2-15, VTSB AD 2-19.

This AIP Supplement will effect from 16 February 2000 and will remain in force until it is incorporated in AIP-Thailand.

---



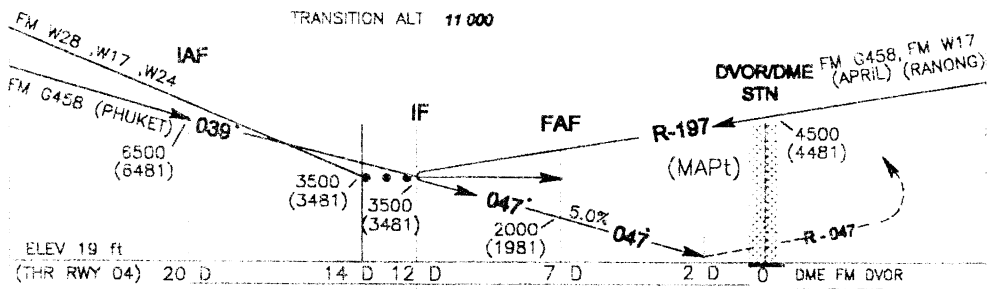
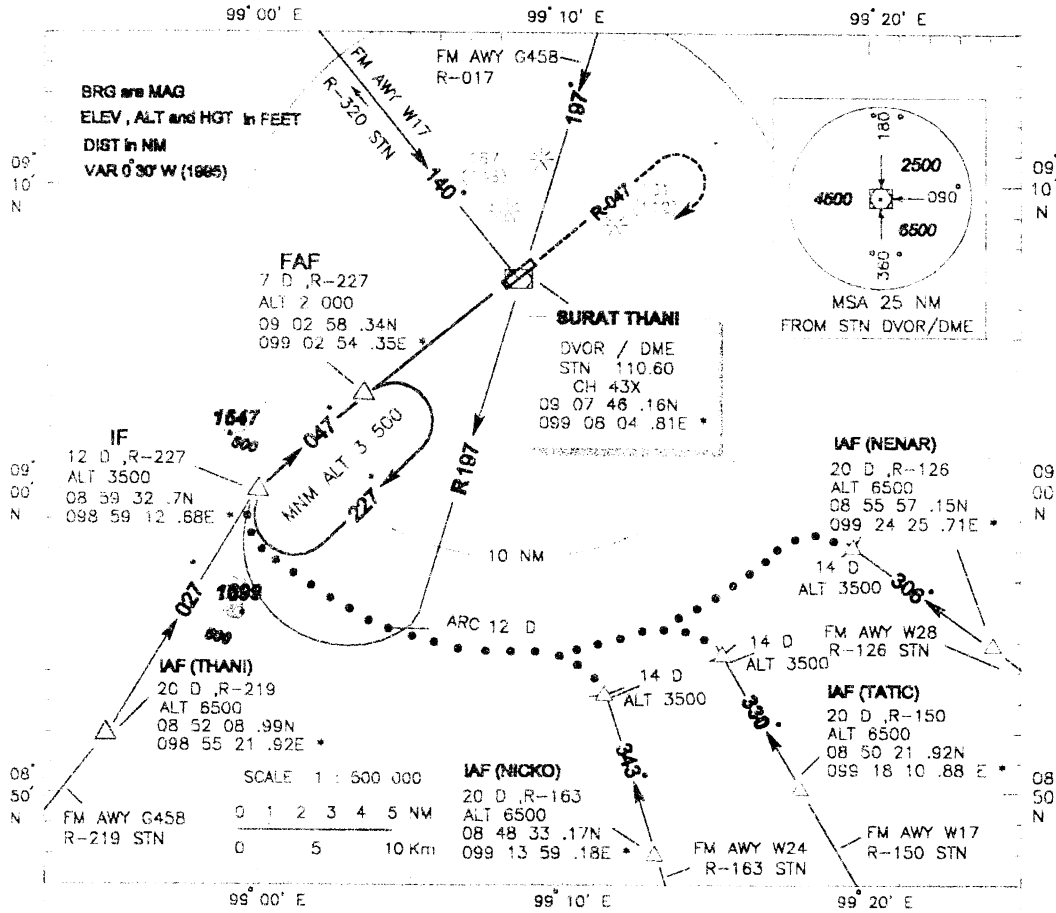
INSTRUMENT AERODROME ELEV 19 ft

APPROACH HEIGHTS RELATED TO AERODROME ELEV.

TWR 122.7, 274.8  
APP 128.8, 306.4

SURAT THANI / Surat Thani

VOR / DME  
RWY 04



**MISSED APPROACH:**

At 2 D, climb on track 047 to the DVOR/DME, then climb on R047 to 1700(1681) ft then turn right continuing climb to 3500 (3481) ft and back to FAF.

		Distance							
		A	B	C	D	2 D	3 D	4 D	5 D
OCA / H						470 (451)	780 (761)	1080 (1061)	1380 (1361)
Straight in approach		470(451)				GS (kt)	100 120	140 160	180 200
Circling		510 (491)	500 (481)	750 (731)	800 (781)	Rate of descent (ft / min)	505 610	710 810	910 1010