

Phone : 66 (0) 2286-0922
Fax : 66 (0) 2287-4060
AFTN : VTBAOYX
E-mail : alsthai@aviation.go.th

DEPARTMENT OF CIVIL AVIATION
Aeronautical Information Service
Tung Mahamek, Bangkok 10120
Thailand

AIRAC
AIP SUPPLEMENT

B3/07
24 May 2007

ESTABLISHMENT OF INSTRUMENT APPROACH CHART
AT NAKHON RATCHASIMA / KHORAT AIRPORT

With effect from 5 July 2007, Instrument Approach chart ILS Z or LLZ Z RWY 24 will be established at Nakhon Ratchasima / Khorat airport as shown on the attached chart.

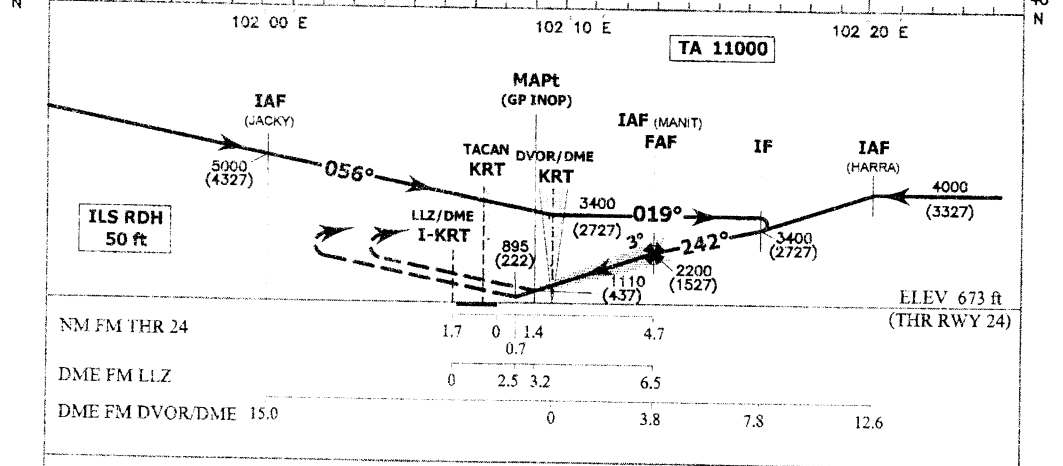
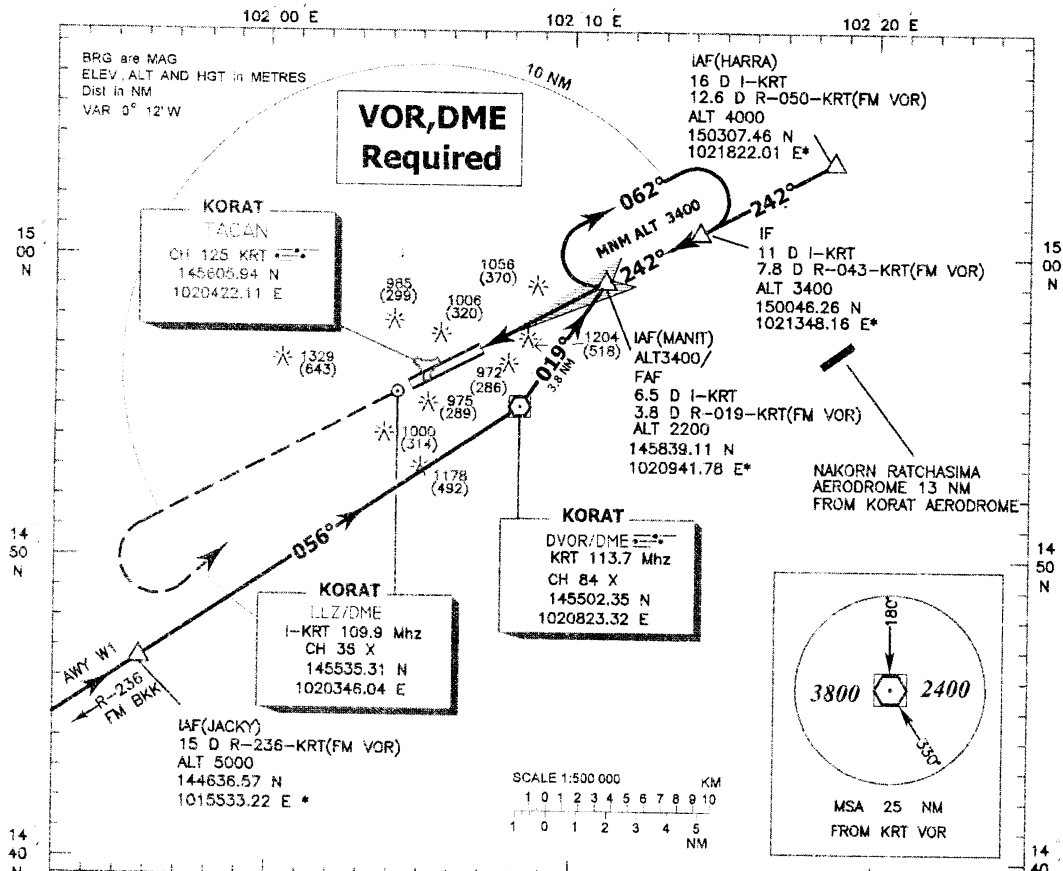
This AIRAC AIP Supplement will remain in force until its contents have been incorporated in AIP Thailand.

INSTRUMENT APPROACH CHART-ICAO

AERODROME ELEV 722 ft
 HEIGHTS RELATED TO THR RWY 24 - ELEV 673 ft

APP : 129.75, 285.0
 TWR : 122.2, 240.5

NAKHON RATCHASIMA/
 Korat (VTUN)
 ILS Z or LLZ Z RWY 24



MISSED APPROACH : Climb on track 242° to 3400 (2727) ft then turn left direct to VOR/DME then turn left and direct to IAF 3400 (2727) and hold.

OCA/H	A	B	C	D
Straight -- in approach	895(222)			
GP INOP	1110(437)			
Circling	1350(677)	1575(902)		

Distance (I-KRT)	3 D	4 D	5 D	6 D			
Altitude (Height)	1090 (417)	1410 (737)	1730 (1057)	2045 (1372)			
Ground speed (GS)	knot	100	120	140	160	180	200
Rate of descent (ft/min)	530	630	730	840	950	1050	
FAF-MAPT 3.2 NM	1:58	1:39	1:25	1:14	1:06	0:59	